

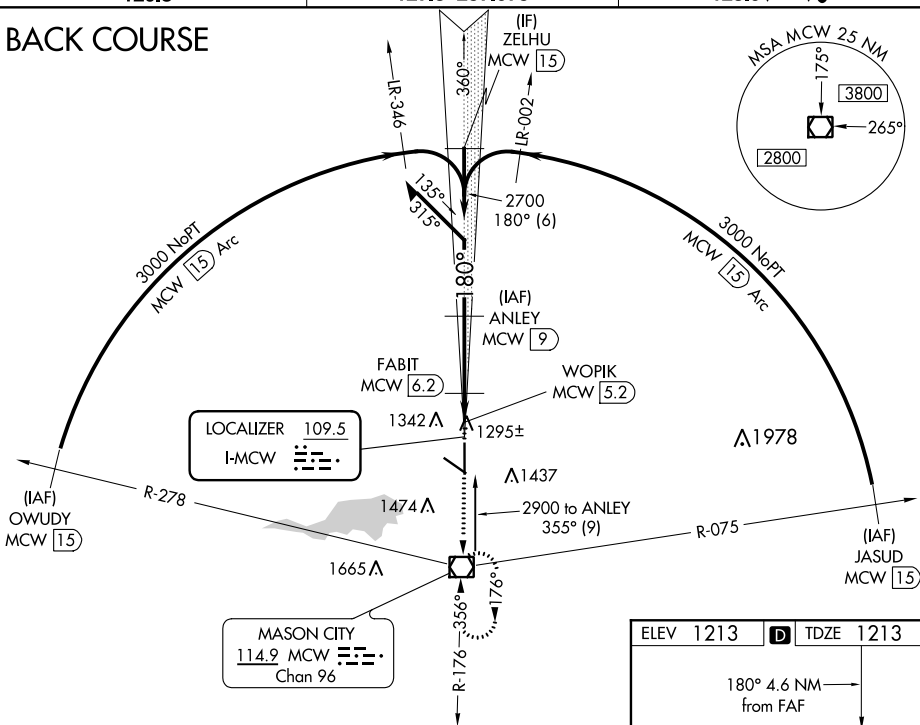
LOC BC RWY 18  
MASON CITY MUNI (MCW)

**MISSED APPROACH:**  
Climb to 3000 direct  
MCW VOR/DME and  
hold

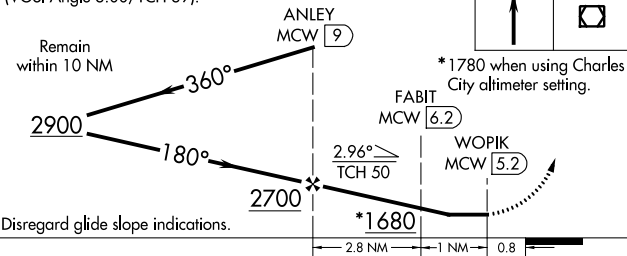
**⚠** DME from MCW VOR/DME. Simultaneous reception of I-MCW and MCW DME required. For inoperative ALS, when using Charles City altimeter setting increase S-18 visibility Cats C and D to 1½ SM. When local altimeter setting not received, use Charles City altimeter setting and increase all MDA 100 feet, increase S-18 visibility Cats C and D ¼ SM and Circling Cat C ¼ SM.

UNICOM  
123.0 (CTAF) **L**

## BACK COURSE



VGSI and descent angles not coincident  
(VGSI Angle 3.00/TCH 39).



CATEGORY	A	B	C	D
S-18	1560- <sup>3</sup> / <sub>4</sub> 347 (400- <sup>3</sup> / <sub>4</sub> )			
CIRCLING	1660-1 447 (500-1)	1680-1 467 (500-1)	1760-1½ 547 (600-1½)	1780-2 567 (600-2)

