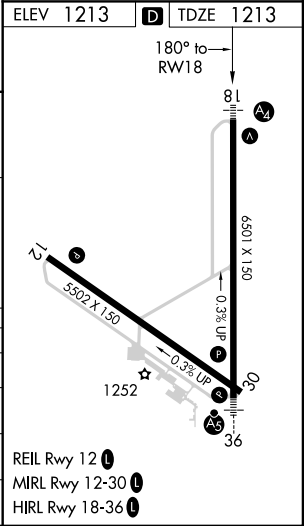
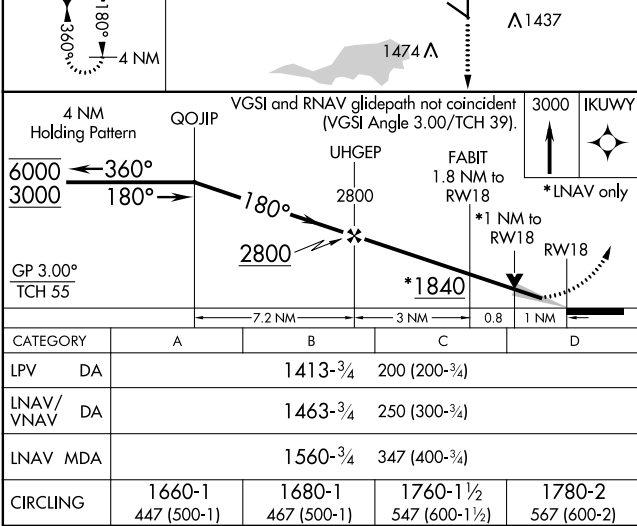
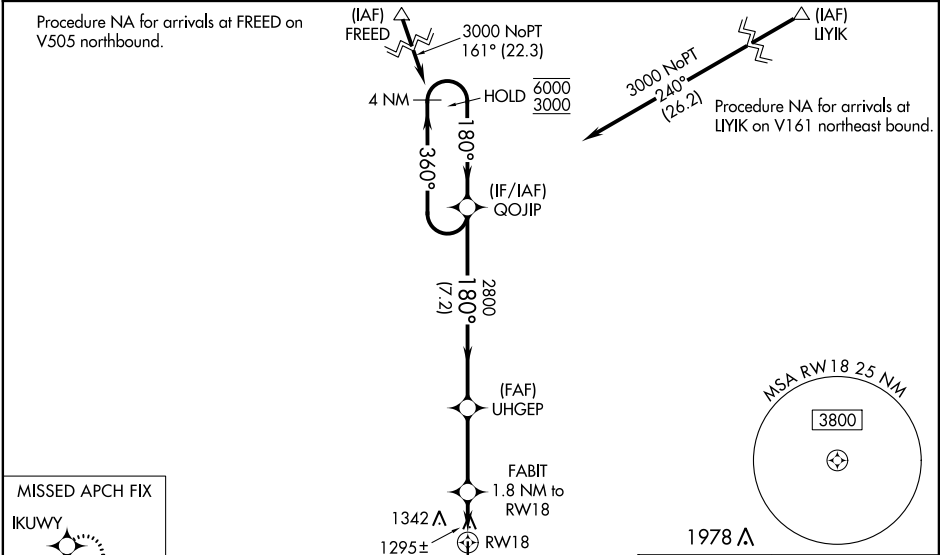


WAAS CH 40100 W18A	APP CRS 180°	Rwy Idg TDZE 1213 Apt Elev 1213
--	------------------------	---

RNAV (GPS) RWY 18
MASON CITY MUNI (MCW)

RNP APCH. ⚠ Baro-VNAV and VDP NA when using Charles City altimeter setting. For uncompensated Baro-VNAV systems, LNAV/VNAV NA below -17°C or above 54°C. Inop table does not apply to LPV and LNAV/VNAV. When local altimeter setting not received, use Charles City altimeter setting and increase all DA 87 feet; increase all MDA 100 feet and LNAV Cats C/D and Circling Cat C visibility ¼ SM. For inop MALS when using Charles City altimeter setting, increase LPV and LNAV/VNAV all Cats visibility ½ SM; LNAV Cats C/D visibility to 1½ SM.	MALS 	MISSED APPROACH: Climb to 3000 direct IKUWY and hold.
--	----------	--

ASOS 120.3	MINNEAPOLIS CENTER 127.3 257.675	UNICOM 123.0 (CTAF) 0
----------------------	--	---------------------------------



NC-3, 03 DEC 2020 to 31 DEC 2020

NC-3, 03 DEC 2020 to 31 DEC 2020