

WAAS CH 40122 W30A	APP CRS 305°	Rwy Idg 5501 TDZE 1195 Apt Elev 1213
--	------------------------	---

RNAV (GPS) RWY 30
MASON CITY MUNI (MCW)

RNP APCH.

T Rwy 30 helicopter visibility reduction below $\frac{3}{4}$ SM NA. VDP NA when using Charles City altimeter setting. When local altimeter setting not received, use Charles City altimeter setting and increase all MDA 100 feet and increase LP and LNAV Cat C and D visibility $\frac{3}{4}$ SM and Circling Cat C and D visibility $\frac{1}{4}$ SM.

MISSED APPROACH: Climb to 2500, then climbing left turn to 3000 direct ZUTIG and hold.

ASOS 120.3	MINNEAPOLIS CENTER 127.3 257.675	UNICOM 123.0 (CTAF) 0
----------------------	--	---------------------------------

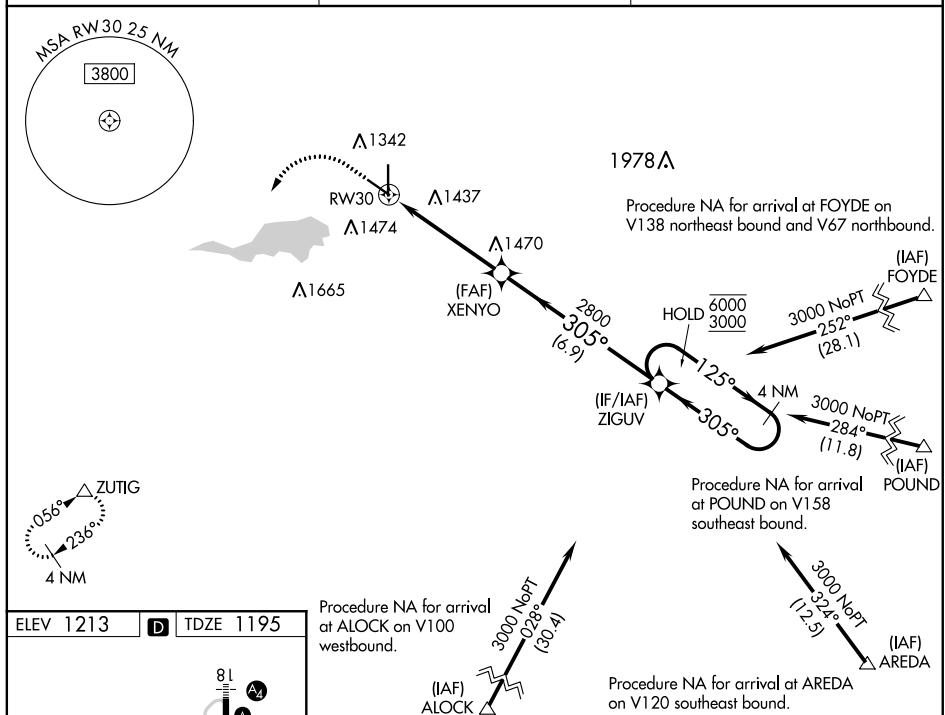


Diagram illustrating the ZUTIG (Zigzag) instrument landing system (ILS) for RWY 30 at XENYO. The diagram shows the approach path, including the 4 NM Holding Pattern, the 3.00° TCH 40, and the 1.4 NM to RWY 30. The diagram also shows the 300° to RWY 30 and the 1252 and 36° angles.

Diagram illustrating the ZUTIG (Zigzag) instrument landing system (ILS) for RWY 30 at XENYO. The diagram shows the approach path, including the 4 NM Holding Pattern, the 3.00° TCH 40, and the 1.4 NM to RWY 30. The diagram also shows the 300° to RWY 30 and the 1252 and 36° angles.

CATEGORY	A	B	C	D
LP MDA	1 680-1	485 (500-1)	1 680-1 $\frac{3}{8}$	485 (500-1 $\frac{3}{8}$)
LNAV MDA	1 680-1	485 (500-1)	1 680-1 $\frac{3}{8}$	485 (500-1 $\frac{3}{8}$)
CIRCLING	1 680-1	467 (500-1)	1760-1 $\frac{1}{2}$ 547 (600-1 $\frac{1}{2}$)	1780-2 567 (600-2)