

|  |                        |   |
|--|------------------------|---|
| WAAS<br>CH <b>93522</b><br><b>W36A</b> | APP CRS<br><b>360°</b> | Rwy Idg<br>TDZE <b>1193</b><br>Apt Elev <b>1213</b> |
|--|------------------------|---|

RNAV (GPS) RWY 36

MASON CITY MUNI (MCW)

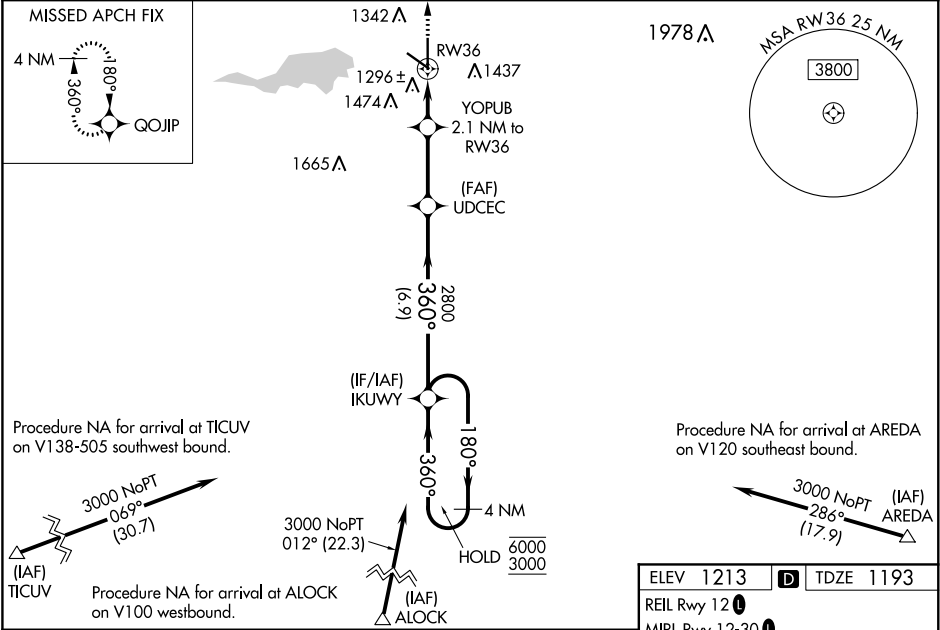
RNP APCH.

▼ For uncompensated Baro-VNAV systems, LNAV/VNAV NA below -17°C or above 54°C.  
▲ When local altimeter setting not received, use Charles City altimeter setting: increase LPV DA to 1480 feet, LNAV/VNAV DA to 1562 and LNAV/VNAV visibility ¼ SM; increase all MDA 100 feet and LNAV Cats C and D visibility ⅓ SM and Circling Cat C ¼ SM. For inop MALSR when using Charles City altimeter setting, increase LPV visibility to 1 SM and LNAV Cats C/D to 1 ⅓ SM. Baro-VNAV and VDP NA when using Charles City altimeter setting. For inop MALSR, increase LNAV/VNAV visibility to ⅔ SM and LNAV Cats C and D to 1 SM.

MALSR

MISSED APPROACH:  
Climb to 3000 direct QOJIP and hold.

|                      |  |                               |
|----------------------|--|-------------------------------|
| ASOS<br><b>120.3</b> | MINNEAPOLIS CENTER<br><b>127.3 257.675</b> | UNICOM<br><b>123.0 (CTAF)</b> |
|----------------------|--|-------------------------------|



|              |       |  |                     |                      |                      |
|--------------|-------|--|---------------------|----------------------|----------------------|
| 3000         | QOJIP | VGSI and RNAV glidepath not coincident (VGSI Angle 2.90/TCH 62). |                     |                      |                      |
| *LNAV only.  |       | YOPUB  | UDCEC               | IKUWY                | 4 NM Holding Pattern |
|              |       | 2.1 NM to RW36   | 2800                | 180° → 6000          | ← 360° 3000          |
|              |       | *1 NM to RW36  |                     | 360°                 |                      |
|              |       | RW36   | 1900*               | 2800                 | GP 3.00°             |
|              |       | 1 NM   | 1.1 NM              | 2.8 NM               | TCH 40               |
|              |       |  |                     | 6.9 NM               |                      |
| CATEGORY     |       | A  | B                   | C                    | D                    |
| LPV DA       |       | 1393- ½ 200 (200-½)  |                     |                      |                      |
| LNAV/VNAV DA |       | 1475- ½ 282 (300-½)  |                     |                      |                      |
| LNAV MDA     |       | 1560- ½ 367 (400-½)  | 1560- ⅝ 367 (400-⅝) |                      |                      |
| CIRCLING     |       | 1660-1 447 (500-1)   | 1680-1 467 (500-1)  | 1760-1½ 547 (600-1½) | 1780-2 567 (600-2)   |

