

WAAS CH <b>58207</b> <b>W25A</b>	APP CRS <b>252°</b>	Rwy Idg <b>4196</b> TDZE <b>663</b> Apt Elev <b>684</b>
--	------------------------	---

RNAV (GPS) RWY 25

IOWA CITY MUNI (IOW)

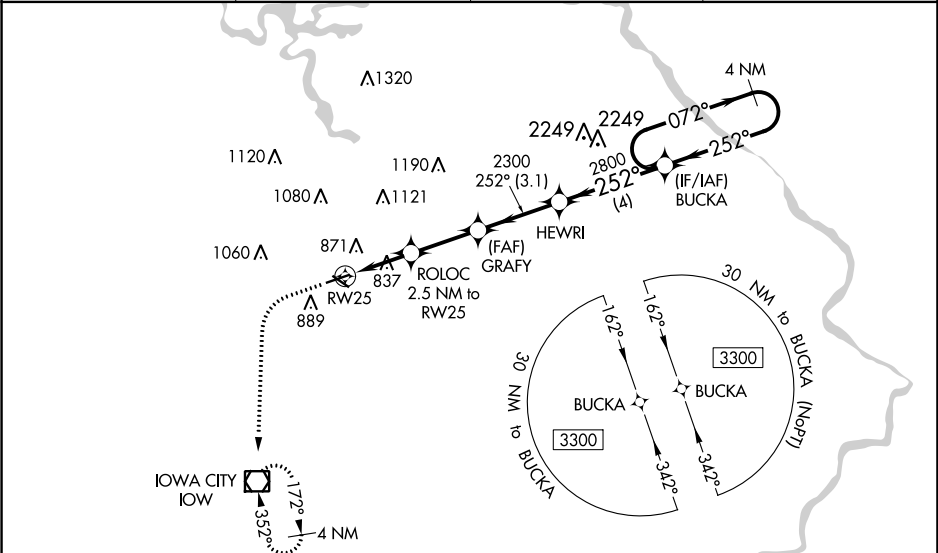
⚠

⚠

Circling to Rwy 7, 12, 30 NA at night. For uncompensated Baro-VNAV systems, LNAV/VNAV NA below -23°C (-9°F) or above 54°C (130°F). Baro-VNAV and VDP NA when using Cedar Rapids altimeter setting. Rwy 25 helicopter visibility reduction below ¾ SM NA. Rwy 7, 12, 30 helicopter visibility reduction below 1 SM NA. DME/DME RNP-0.3 NA. When local altimeter setting not received, use Cedar Rapids altimeter setting: increase LPV DA to 1056, increase LNAV/VNAV DA to 1196 feet and visibility ¼ SM; increase all MDAs 80 feet and visibility Cats C and D 1¼ SM increase Circling Cat D visibility ¼ SM.

MISSED APPROACH: Climb to 1100 then climbing left turn to 2600 direct IOW VOR/DME and hold.

ASOS <b>128.075</b>	CEDAR RAPIDS APP CON* <b>119.7 266.8</b>	CLNC DEL <b>119.05</b>	UNICOM <b>122.8 (CTAF) 0</b>
------------------------	---	---------------------------	---------------------------------



<div><div>1100</div><div>2600</div><div>IOW</div></div> <div><div><div>↑</div><div>↙</div></div><div><div>*LNAV only.</div><div>ROLOC 2.5 NM to RW25</div><div>*1.3 NM to RW25</div><div>1.3 NM</div><div>1.2 NM</div><div>2.5 NM</div><div>3.1 NM</div><div>4 NM</div></div></div>	<div><div>GRAFY</div><div>2300</div><div>HEWRI</div><div>BUCKA</div><div>4 NM Holding Pattern</div><div>252°</div><div>2800</div><div>072°→</div><div>←252°</div><div>3300</div><div>GP 3.00°</div><div>TCH 42</div></div>			
CATEGORY	A	B	C	D
LPV DA	992-1 ⅓ 329 (400-1 ⅓)			
LNAV/VNAV DA	1132-1 ⅓ 469 (500-1 ⅓)			
LNAV MDA	1100-1 437 (500-1)		1100-1 ¼ 437 (500-1 ¼)	
CIRCLING	1260-1 576 (600-1)		1440-2 ¼ 756 (800-2 ¼)	1440-2 ½ 756 (800-2 ½)

ELEV 684

TDZE 663

REIL Rws 7 and 25

MIRL Rws 7-25 and 12-30 0