

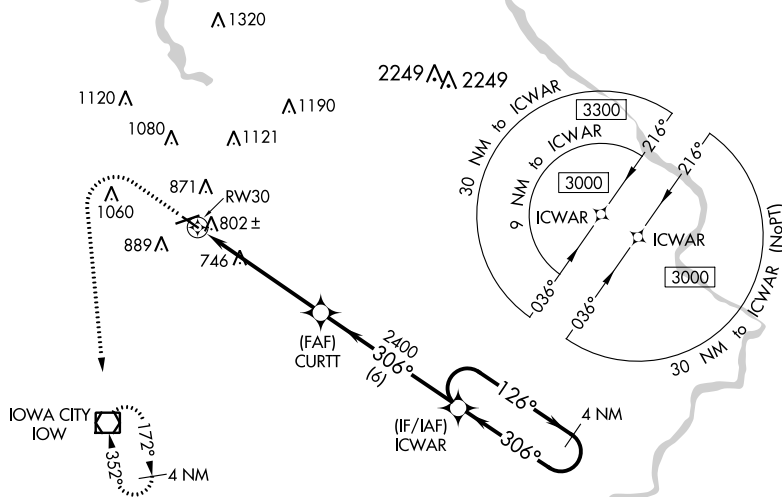
WAAS CH 86841 W30A	APP CRS 306°	Rwy Idg 3900 TDZE 657 Apt Elev 684
--	------------------------	---

RNAV (GPS) RWY 30
IOWA CITY MUNI (IOW)

V Rwy 7, 12, 30 helicopter visibility reduction below 1 SM NA. DME/DME RNP-0.3 NA.
A When local altimeter setting not received, use Cedar Rapids altimeter setting and increase all MDA 80 feet, LP Cat C and D visibility $\frac{1}{2}$ SM, LNAV and Circling Cat C and D visibility $\frac{1}{4}$ SM. Straight-in Rwy 30 NA at night, Circling Rwy 7, 12 NA at night.

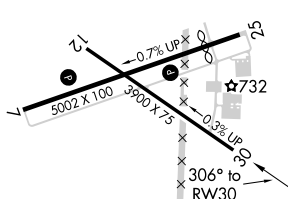
MISSED APPROACH: Climb to 1100 then climbing left turn to 3000 direct IOW VOR/DME and hold.

ASOS 128.075	CEDAR RAPIDS APP CON ★ 119.7 266.8	CLINC DEL 119.05	UNICOM 122.8 (CTAF) ①
------------------------	--	----------------------------	---------------------------------

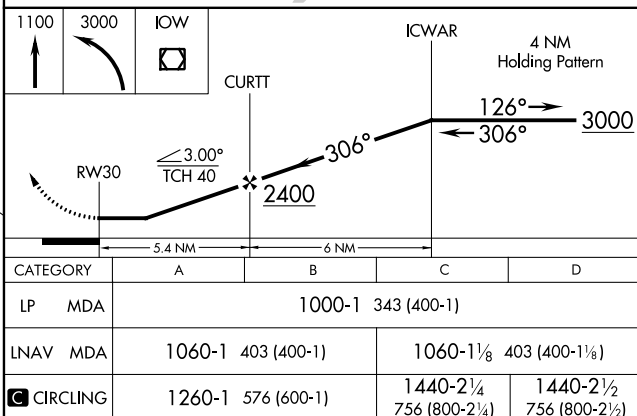


Procedure NA for arrivals at IOW VOR/DME
on airway radials 057 CW 142.

ELEV 684	D	TDZE 657
----------	----------	----------



REIL Rwy 7 and 25

MIRL Rwy 7-25 and 12-30 **L**

RNAV (GPS) RWY 30