

VOR/DME IOW <b>116.2</b> Chan <b>109</b>	APP CRS <b>017°</b>	Rwy Idg TDZE Apt Elev <b>N/A</b> <b>N/A</b> <b>684</b>
--	------------------------	---

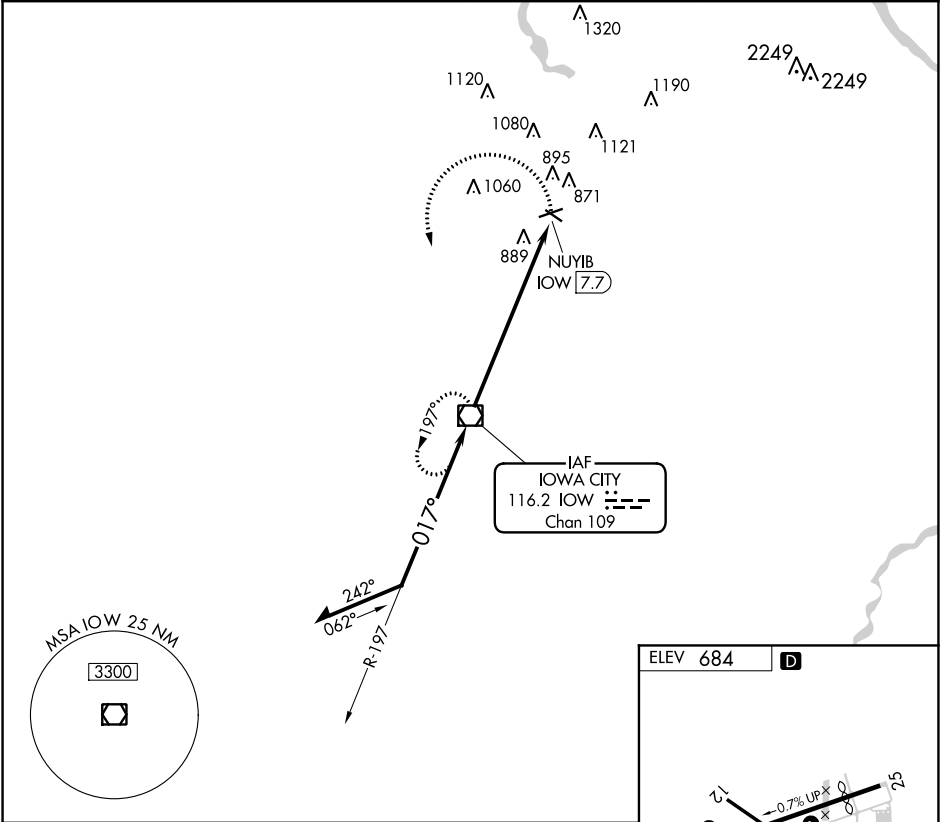
VOR-A

IOWA CITY MUNI (IOW)

If local altimeter setting not received, use Cedar Rapids altimeter setting and increase all MDAs 80 feet. Helicopter visibility reduction below 1 SM NA. Circling Rwy 7, 12, 30 NA at night.

MISSED APPROACH: Climbing left turn to 2600 direct IOW VOR/DME and hold.

ASOS <b>128.075</b>	CEDAR RAPIDS APP CON ★ <b>119.7 266.8</b>	CLNC DEL <b>119.05</b>	UNICOM <b>122.8 (CTAF) 0</b>
------------------------	--	---------------------------	---------------------------------



Remain within 10 NM

2300

017°

2300

197°

IOW VOR/DME

2600

IOW

NUYIB IOW 7.7

7.7 NM

017° 7.7 NM from FAF

REIL Rwy 7 and 25

MIRL Rwy 7-25 and 12-30 0

ELEV 684

D

1

25

0.7% UP

0.3% UP

5002 X 100

3900 X 75

732

CATEGORY	A	B	C	D	FAF to MAP 7.7 NM				
CIRCLING	1280-1 596 (600-1)			NA		Knots	60	90	120
						Min:Sec	7:42	5:08	3:51
								150	180
								3:05	2:34

NC-3, 03 DEC 2020 to 31 DEC 2020

NC-3, 03 DEC 2020 to 31 DEC 2020