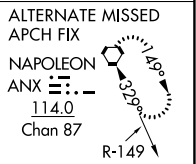
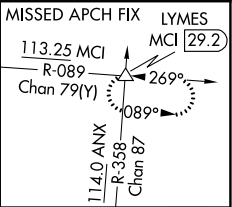
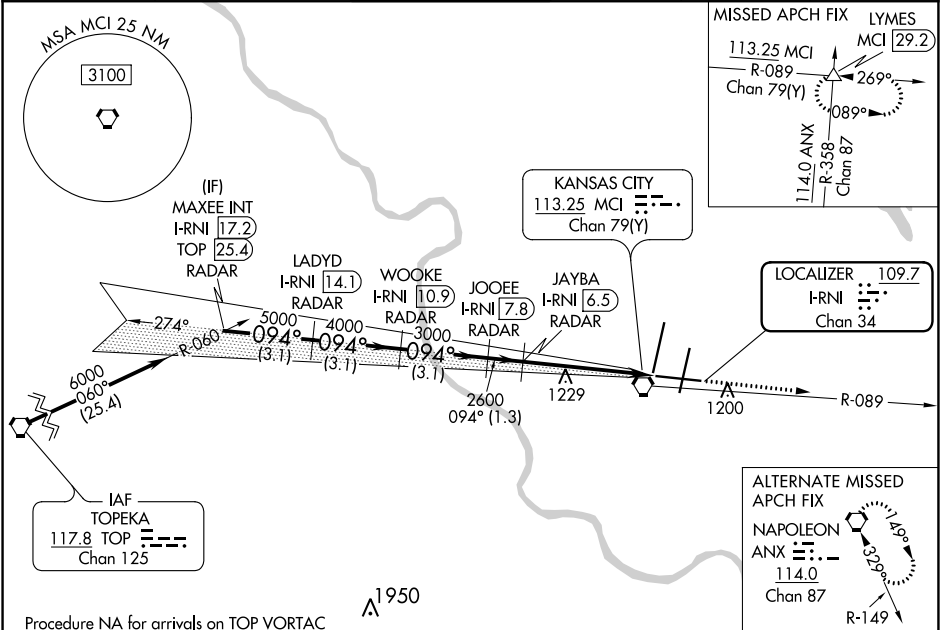


LOC/DME I-RNI 109.7 Chan 34	APP CRS 094°	Rwy Idg TDZE Apt Elev 9501 1015 1026
---	------------------------	--

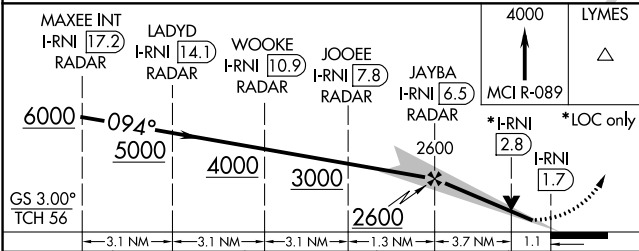
ILS or LOC RWY 9
KANSAS CITY INTL (MCI)

▼ Inop table does not apply to S-ILS 9. DME or RADAR required. For inop MALSR, increase S-LOC 9 Cat A/B visibility to RVR 5000 and Cat C/D visibility to 1½ mile.	MALSR 	MISSED APPROACH: Climb to 4000 on MCI R-089 to LYMES INT/MCI 29.2 DME and hold.
---	-----------	---

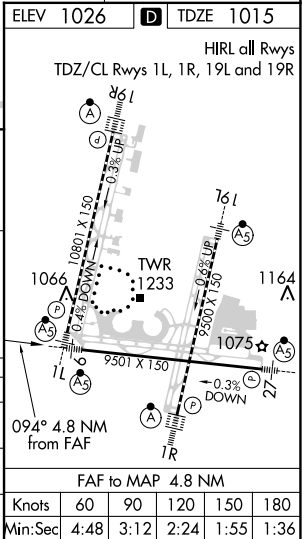
D-ATIS 128.375	KANSAS CITY APP CON 120.95 318.1	INTERNATIONAL TOWER 128.2 254.25	GND CON 121.8	CLNC DEL 135.7	CPDLC
--------------------------	--	--	-------------------------	--------------------------	-------



DME or RADAR REQUIRED



CATEGORY	A	B	C	D
S-ILS 9	1265/40		250 (300-¾)	
S-LOC 9	1420/40		405 (400-¾)	
CIRCLING	1540-1	514 (600-1)	1540-1½ 514 (600-1½)	1580-2 554 (600-2)



NC-3, 03 DEC 2020 to 31 DEC 2020

NC-3, 03 DEC 2020 to 31 DEC 2020