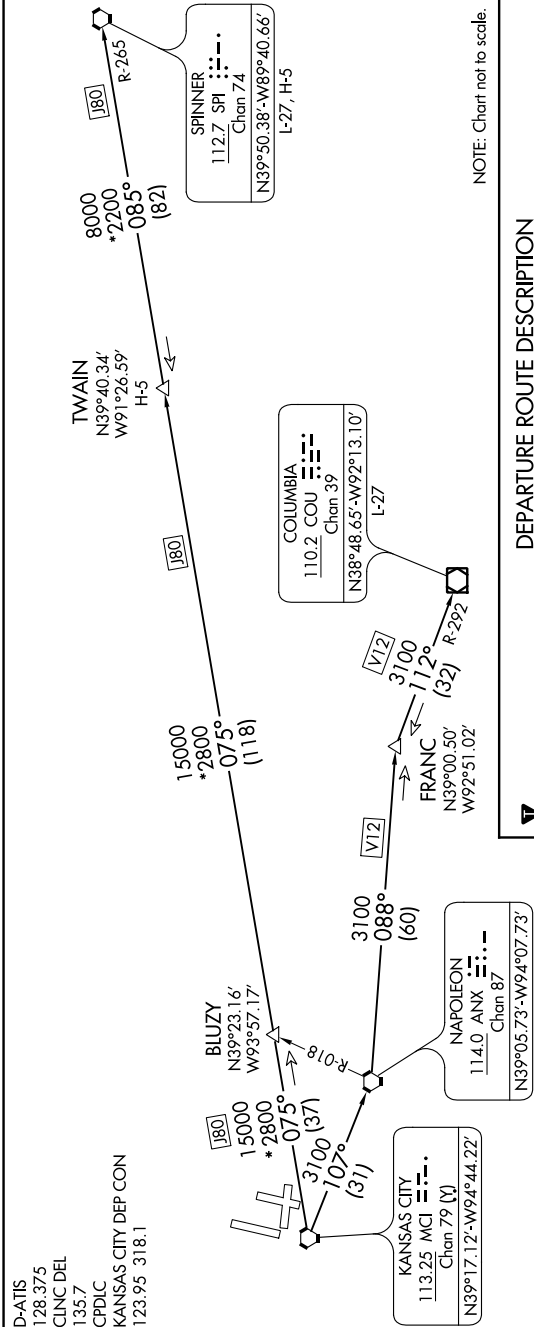


LAKE THREE DEPARTURE

AL-780 (FAA)

KANSAS CITY INTL (MCI)  
KANSAS CITY, MISSOURI

NC-3, 03 DEC 2020 to 31 DEC 2020



DEPARTURE ROUTE DESCRIPTION

TAKEOFF ALL RUNWAYS: Climb on assigned heading for RADAR vectors to appropriate route. Expect filed altitude 10 minutes after departure.

COLUMBIA TRANSITION (LAKES3 COU): From over MCI VORTAC on MCI R-107 to ANX VORTAC, then on ANX R-088 and COU R-292 to COU VOR/DME.

FRANC TRANSITION (LAKES3.FRANC): From over MCI VORTAC on MCI R-107 to ANX VORTAC, then on ANX R-088 to FRANC FIX.

SPINNER TRANSITION (LAKES3.SPI): From over MCI VORTAC on MCI R-075 and SPI R-265 to TWAIN FIX, then on SPI R-265 to SPI VORTAC.

TWAIN TRANSITION (LAKES3.TWAIN): From over MCI VORTAC on MCI R-075 and SPI R-265 to TWAIN FIX.

NOTE: RADAR required.  
NOTE: DME required.

TAKEOFF MINIMUMS  
Rwys 1L, 1R, 9, 19R, 19L, 27: Standard.

LAKE THREE DEPARTURE

NC-3, 03 DEC 2020 to 31 DEC 2020