

APP CRS <b>274°</b>	Rwy Idg TDZE Apt Elev	<b>9501</b> <b>1026</b> <b>1026</b>
------------------------	-----------------------------	-------------------------------------------

RNAV (RNP) Z RWY 27  
KANSAS CITY INTL (MCI)

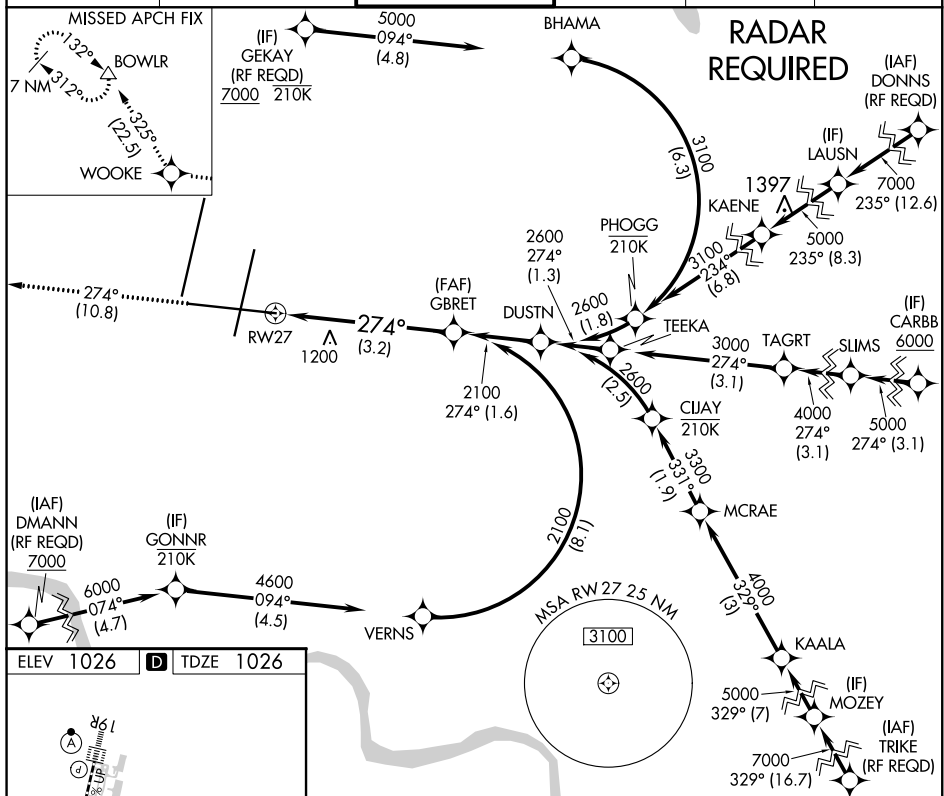
**T** For uncompensated Baro-VNAV systems, procedure NA below -20°C (-4°F) or above 54°C (130°F). For inop MALS, increase RNP 0.15 all Cats visibility to 1¼ and RNP 0.30 all Cats visibility to 1½ . GPS required.

MALSR

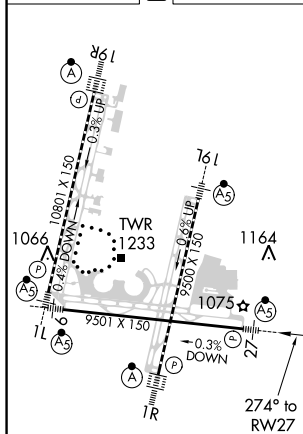


**MISSED APPROACH:** Climb to 4000 on track 274° to WOOLKE and on track 325° to BOWLER and hold.

D-ATIS <b>128.375</b>	KANSAS CITY APP CON <b>120.95 318.1</b>	INTERNATIONAL TOWER <b>128.2 254.25</b>	GND CON <b>121.8</b>	CLNC DEL <b>135.7</b>	CPDLC
--------------------------	--------------------------------------------	--------------------------------------------	-------------------------	--------------------------	-------



ELEV 1026	<b>D</b>	TDZE 1026
-----------	----------	-----------



HIRL all Rwy's  
TDZ/CL Rwy's 1L, 1R, 19R and 19L

4000 ↑	tr 274°	WOOKE ✦	tr 325°	BOWLRL △	GBRET 2100	2100	GP 3.00° TCH 49
VGSI and RNAV glidepath not coincident (VGSI Angle 3.00°/TCH 72).					<p>See Planview for multiple IF locations.</p>		
CATEGORY	A	B	C	D			
RNP 0.15 DA	1410/45 384 (400-%)						
RNP 0.30 DA	1511/60 485 (500-1½)						

**AUTHORIZATION REQUIRED**

KANSAS CITY, MISSOURI

Amdt 1A 21AUG14

KANSAS CITY INTL (MCT)

39°18'N-94°43'W

## RNAV (RNP) Z RWY 27

NC-3, 03 DEC 2020 to 31 DEC 2020

NC-3, 03 DEC 2020 to 31 DEC 2020