

WAAS CH 72908 W19B	APP CRS 191°	Rwy Idg 10801 TDZE 989 Apt Elev 1026
--	------------------------	---

RNAV (GPS) Y RWY 19R

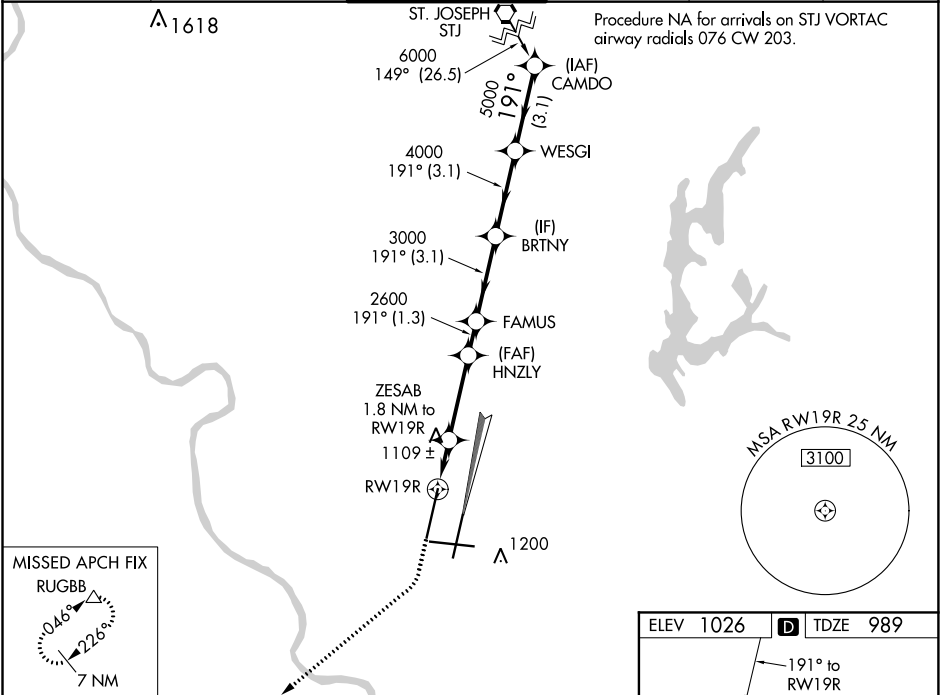
KANSAS CITY INTL (MCI)

▼ DME/DME RNP-0.3 NA. Simultaneous approach authorized with Rwy 19L. LNAV procedure NA during simultaneous operations. For uncompensated Baro-VNAV systems, LNAV/VNAV NA below -20°C (-4°F) or above 54°C (130°F). For inop ALSF, increase LPV Cat E visibility to RVR 4000, LNAV/VNAV all Cats visibility to RVR 5000 and LNAV Cat E visibility to RVR 6000. Use of FD or AP providing RNAV track guidance required during simultaneous operations.

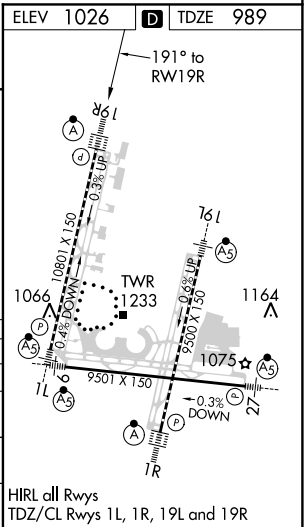
ALSF-2

MISSED APPROACH:
Climb to 2000 then climbing right turn to 4000 direct RUGBB and hold.

D-ATIS 128.375	KANSAS CITY APP CON 120.95 318.1	INTERNATIONAL TOWER 128.2 254.25	GND CON 121.8	CLNC DEL 135.7	CPDLC
--------------------------	--	--	-------------------------	--------------------------	-------



 2000		 4000	RUGBB	VGSI and RNAV glidepath not coincident (VGSI Angle 3.00/TCH 80).		CAMDO
*LNAV only		ZESAB 1.8 NM to RWY19R		HNZLY	FAMUS	BRTNY
 RWY19R		*1 NM to RWY19R		2600	3000	4000
1 NM		0.8	3.1 NM	1.3 NM	3.1 NM	3.1 NM
CATEGORY	A	B	C	D	E	
LPV DA	1189/18		200 (200-½)			
LNAV/VNAV DA	1292/24		303 (300-½)			
LNAV MDA	1380/24	391 (400-½)	1380/40	391 (400-¾)		
CIRCLING	1540-1	514 (600-1)	1540-1½ 514 (600-1½)	1580-2	554 (600-2)	



NC-3, 03 DEC 2020 to 31 DEC 2020

NC-3, 03 DEC 2020 to 31 DEC 2020