

WAAS CH 58208 W01A	APP CRS 011°	Rwy Idg 9500 TDZE 1017 Apt Elev 1026
--	------------------------	---

RNAV (GPS) Y RWY 1R
KANSAS CITY INTL (MCI)

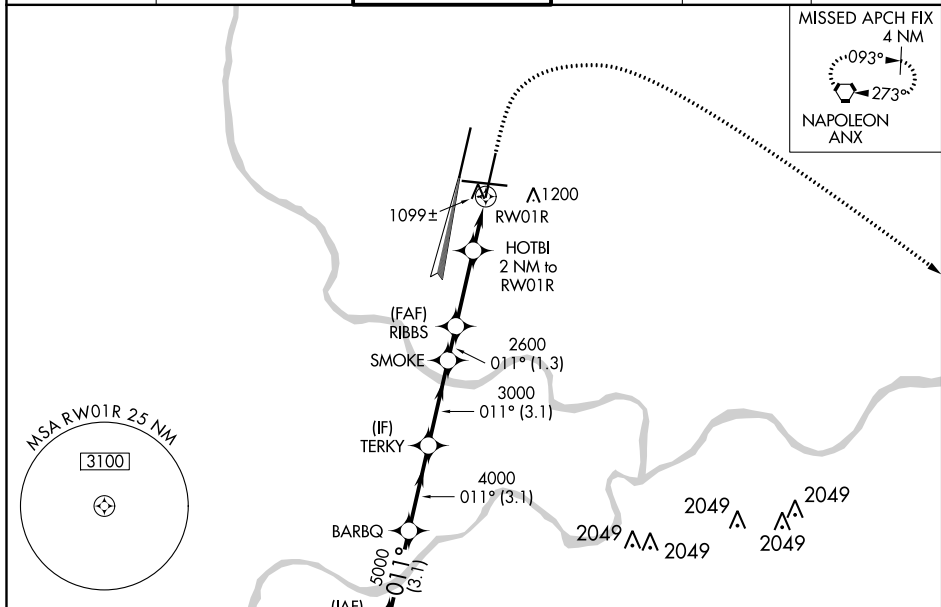
▼ For uncompensated Baro-VNAV systems, LNAV/VNAV NA below -20°C (-4°F) or above 54°C (130°F). DME/DME RNP-0.3 NA. For inop ALSF, increase LPV Cat E visibility to RVR 4000, LNAV/VNAV Cat E visibility to RVR 5000 and LNAV Cat C/D/E visibility to RVR 5000. Simultaneous approach authorized with Rwy 1L. LNAV procedure NA during simultaneous operations. Use of FD or AP providing RNAV track guidance required during simultaneous operations.

ALSF-2



MISSED APPROACH:
Climb to 1500 then
climbing right turn to
4000 direct ANX
VORTAC and hold.

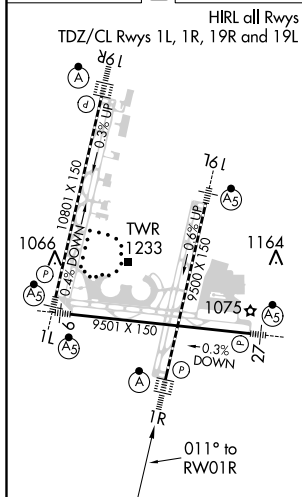
D-ATIS 128.375	KANSAS CITY APP CON 120.95 318.1	INTERNATIONAL TOWER 128.2 254.25	GND CON 121.8	CLNC DEL 135.7	CPDLC
-------------------	-------------------------------------	-------------------------------------	------------------	-------------------	-------



NC-3, 03 DEC 2020 to 31 DEC 2020

ELEV 1026	D	TDZE 1017
-----------	----------	-----------

HIRL all Rwy's
19R and 19L



Procedure NA for arrival
on BUM VORTAC airway
radials 264 CW 012.

