

WAAS CH <b>86410</b> <b>W30A</b>	APP CRS <b>300°</b>	Rwy Idg TDZE Apt Elev	<b>6000</b> <b>549</b> <b>549</b>
--	------------------------	-----------------------------	---

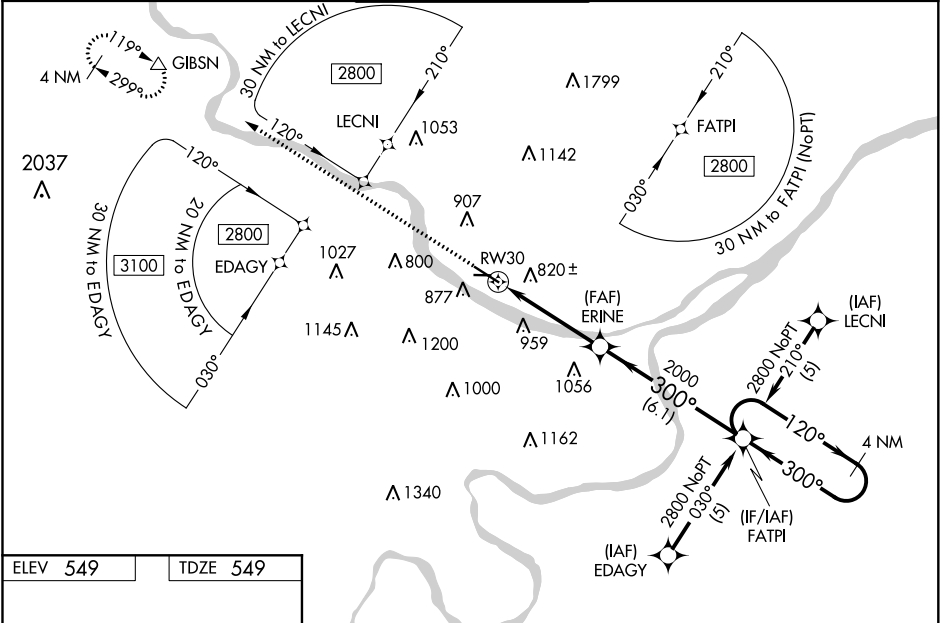
RNAV (GPS) RWY 30  
JEFFERSON CITY MEMORIAL (JEF)

⚠ For uncompensated Baro-VNAV systems, LNAV/VNAV NA below -16°C (4°F) or above 47°C (116°F). DME/DME RNP-0.3 NA.  
⚠ When local altimeter setting not received, use Columbia Rgnl altimeter setting and increase all DA/MDA 80 feet; increase LPV all Cats, LNAV/VNAV all Cats, LNAV Cats B, C, and D, and Circling Cats A, B and C visibility ¼ SM. For inoperative MALSR, when using Columbia Rgnl altimeter setting increase LPV all Cats visibility to 1¼. Baro-VNAV and VDP NA when using Columbia Rgnl altimeter setting. Circling Rwy 9 NA at night.

MALSR

MISSED APPROACH: Climb to 3000 direct GIBSN and hold.

ASOS <b>133.625</b>	MIZZU APP CON <b>124.375 353.7</b>	JEFFERSON CITY TOWER ★ <b>125.6 (CTAF) 0</b>	GND CON <b>121.7</b>	UNICOM <b>122.95</b>
------------------------	---------------------------------------	---	-------------------------	-------------------------



ELEV 549 TDZE 549

REIL Rwy 9, 12, and 27  
MIRL Rwy 9-27  
HIRL Rwy 12-30

3000	GIBSN	VGSi and RNAV glidepath not coincident (VGSi Angle 3.00/TCH 50).				4 NM Holding Pattern
* LNAV only.		* 2 NM to RW30	ERINE	FATPI	120° → 2800	GP 3.00° TCH 54
		2 NM	2.3 NM	6.1 NM		
CATEGORY	A	B	C	D		
LPV DA	799-½		250 (300-½)			
LNAV/VNAV DA	1322-2¼		773 (800-2¼)			
LNAV MDA	1240-½	691 (700-½)	1240-1½	691 (700-1½)	1240-1¾	691 (700-1¾)
CIRCLING	1320-1	1320-1¼	1320-2¼	1560-3		
	771 (800-1)	771 (800-1¼)	771 (800-2¼)	1011 (1100-3)		

NC-3, 03 DEC 2020 to 31 DEC 2020

NC-3, 03 DEC 2020 to 31 DEC 2020