

WAAS CH 40410 W32A	APP CRS 317°	Rwy Idg TDZE Apt Elev	4999 292 294
--	------------------------	-----------------------------	---

RNAV (GPS) RWY 32

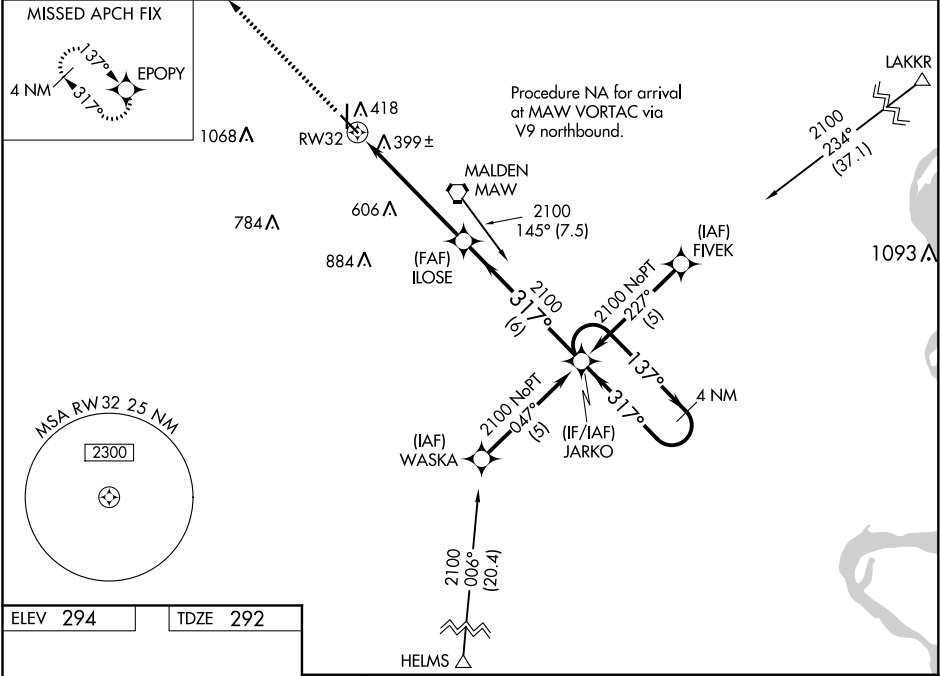
MALDEN RGNL (MAW)

NA

DME/DME RNP-0.3 NA. Visibility reduction by helicopters NA. When local altimeter setting not received, use Poplar Bluff altimeter setting and increase all DA 50 feet, all MDA 60 feet, increase LPV all Cats, LNAV/VNAV all Cats and LNAV Cat C visibilities ¼ mile. For uncompensated Baro-VNAV systems, LNAV/VNAV NA below -15°C (5°F) and above 54°C (130°F). Baro-VNAV and VDP NA when using Poplar Bluff altimeter setting.

MISSED APPROACH: Climb to 2100 direct EPOPY and hold.

AWOS-3PT 119.825	MEMPHIS CENTER 133.65 292.15	GCO 135.075	UNICOM 122.8 (CTAF)
----------------------------	--	-----------------------	-------------------------------



ELEV 294	TDZE 292
-----------------	-----------------

2100

EPOPY

ILOSE

JARKO

RW32

4 NM Holding Pattern

317°

137°

2100

GP 3.00°

TCH 41

1.3

4.2 NM

6 NM

CATEGORY	A	B	C	D
LPV DA	581-1	289 (300-1)		NA
LNAV/VNAV DA	698-1½	406 (500-1½)		NA
LNAV MDA	740-1	448 (500-1)	740-1¼ 448 (500-1¼)	NA
CIRCLING	740-1 446 (500-1)	820-1 526 (600-1)	820-1½ 526 (600-1½)	NA

REIL Rwy 14 and 32

MIRL Rwy 14-32 and 18-36