

| | | | |
|------------|---------|----------|------|
| VORTAC MAW | APP CRS | Rwy Idg | 4999 |
| 111.2 | 120° | TDZE | 292 |
| Chan 49 | | Apt Elev | 294 |

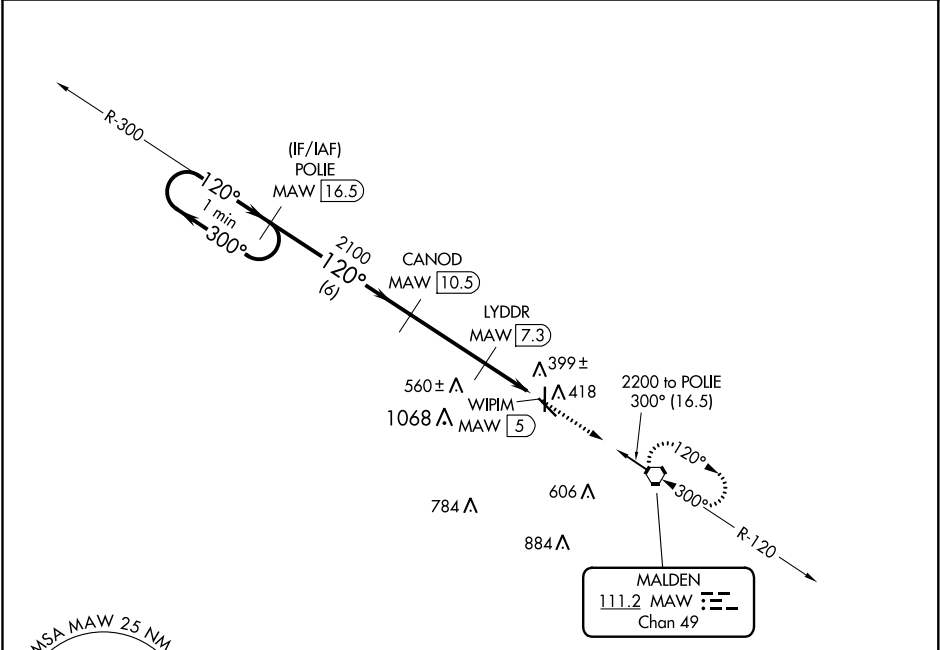
VOR/DME RWY 14
MALDEN RGNL (MAW)

NA

When local altimeter setting not received, use Poplar Bluff altimeter setting and increase all MDA 60 feet and S-14 Cat C visibility ¼ mile. VDP NA when using Poplar Bluff altimeter setting.

MISSED APPROACH: Climb to 2200 direct MAW VORTAC and hold, continue climb-in-hold to 2200.

| | | | |
|----------|----------------|---------|----------------|
| AWOS-3PT | MEMPHIS CENTER | GCO | UNICOM |
| 119.825 | 133.65 292.15 | 135.075 | 122.8 (CTAF) 0 |



ELEV 294 TDZE 292

120° 5.5 NM from FAF

81 100 501 4999 X 80 36

REIL Rwy 14 and 32 0

MIRL Rwy 14-32 and 18-36 0

| | | | | | | |
|----------------------------|-------------------|-------------------|---------------------|--------------|--------------|----------|
| One Minute Holding Pattern | POLIE MAW 16.5 | CANOD MAW 10.5 | LYDDR MAW 7.3 | MAW 6 | WIPIIM MAW 5 | 2200 MAW |
| 2200 | 300° | 120° | 120° | 3.02° TCH 40 | 1000 | |
| 6 NM | | 3.2 NM | 1.3 | 1 NM | | |
| CATEGORY | A | B | C | D | | |
| S-14 | 660-1 368 (400-1) | | | | NA | |
| CIRCLING | 720-1 426 (500-1) | 820-1 526 (600-1) | 820-1½ 526 (600-1½) | NA | | |

NC-3, 03 DEC 2020 to 31 DEC 2020

NC-3, 03 DEC 2020 to 31 DEC 2020