

WAAS CH <b>93611</b> <b>W31A</b>	APP CRS <b>312°</b>	Rwy Idg TDZE <b>841</b> Apt Elev <b>845</b>
--	------------------------	---

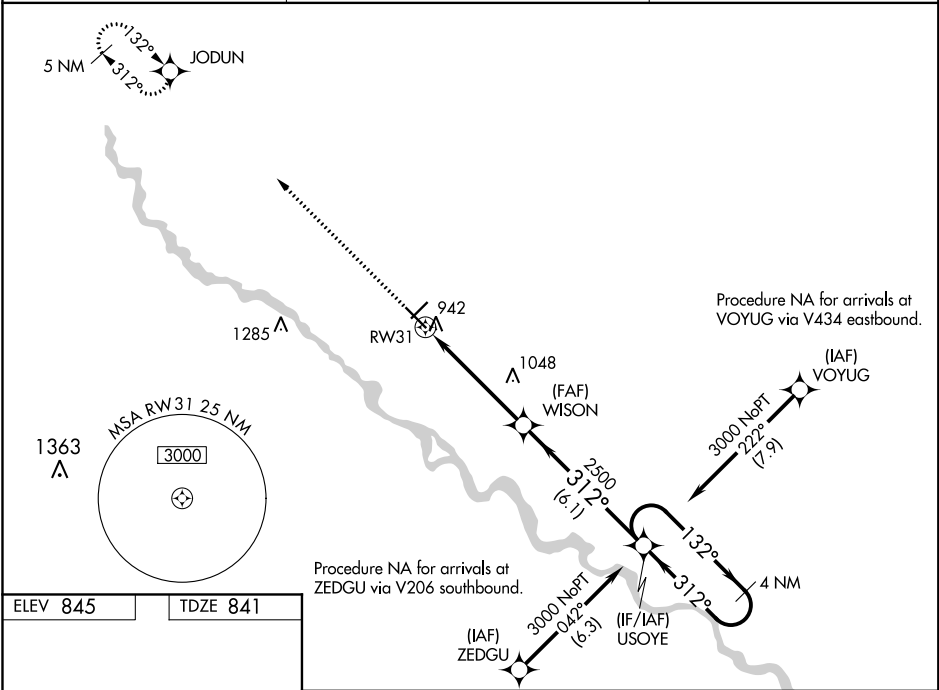
RNAV (GPS) RWY 31  
OTTUMWA RGNL (OTM)

**⚠** For uncompensated Baro-VNAV systems, procedure NA below -16°C (4°F) or above 54°C (130°F). DME/DME RNP-0.3 NA. Baro-VNAV and VDP NA when using Fairfield altimeter setting. When local altimeter setting not received, use Fairfield altimeter setting and increase all DA 56 feet and all MDA 60 feet. Increase LNAV/VNAV all Cats and LNAV Cat C ¼ mile. For inoperative MALSR when using Fairfield altimeter setting, increase LPV all Cats visibility to 1 mile.

MALSR

MISSED APPROACH:  
Climb to 2800 direct JODUN and hold.

ASOS <b>124.175</b>	CHICAGO CENTER <b>118.15 335.575</b>	UNICOM <b>123.0 (CTAF)</b>
------------------------	---	-------------------------------



REIL Rwy 13  
REIL Rws 4 and 22  
HIRL Rws 4-22 and 13-31

4600 X 100  
3685 X 150  
312° to RW31

JODUN  
WISON  
USOYE  
4 NM Holding Pattern  
3000  
132°  
312°  
2500  
GP 3.00°  
TCH 52  
1.3 NM  
3.7 NM  
6.1 NM  
\*LNAV only  
\*1.3 NM to RW31  
RW31

CATEGORY	A	B	C	D
LPV DA	1091-½ 250 (300-½)			NA
LNAV/VNAV DA	1192-¾ 351 (400-¾)			NA
LNAV MDA	1300-½	459 (500-½)	1300-¾ 459 (500-¾)	NA
CIRCLING	1300-1	455 (500-1)	1300-1½ 455 (500-1½)	NA

NC-3, 03 DEC 2020 to 31 DEC 2020

NC-3, 03 DEC 2020 to 31 DEC 2020