


DUBUQUE, IOWA

AL-923 (FAA)

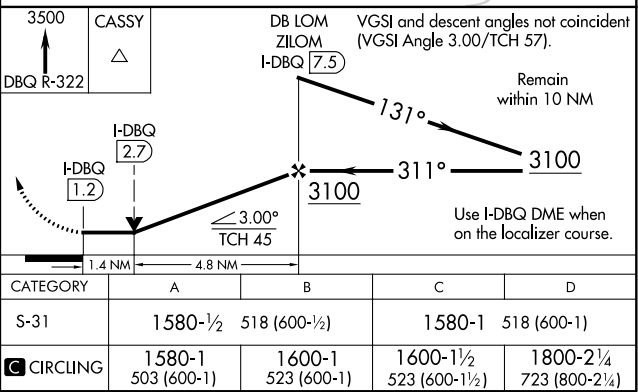
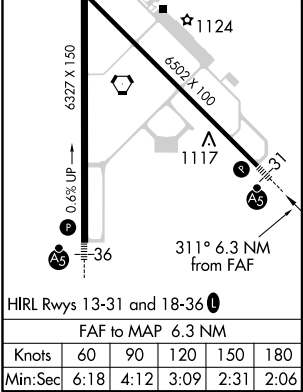
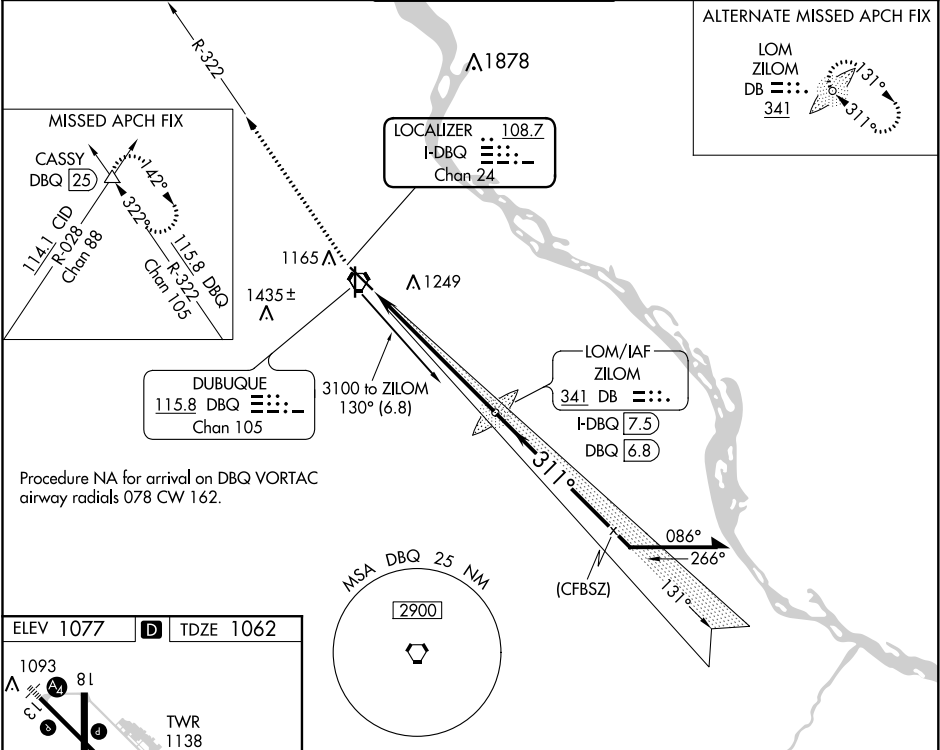
20310

LOC/DME I-DBQ 108.7 Chan 24	APP CRS 311°	Rwy ldg TDZE Apt Elev 6502 1062 1077
--	------------------------	--

LOC RWY 31
DUBUQUE RGNL (DBQ)

ADF or DME required for procedure entry.	MALSR 	MISSED APPROACH: Climb to 3500 on DBQ VORTAC R-322 to CASSY INT/ DBQ 25 DME and hold.
For inop ALS, increase S-31 Cat C/D visibility to 1 3/8 SM. -34°C/-29°F		

ATIS 127.25	CHICAGO CENTER 133.95 281.4	DUBUQUE TOWER★ 119.5 (CTAF) 0 254.4	GND CON 121.8	UNICOM 122.95
-----------------------	---------------------------------------	---	-------------------------	-------------------------



DUBUQUE, IOWA
Amdt 2 26MAR20

42°24'N-90°43'W

DUBUQUE RGNL (DBQ)
LOC RWY 31

NC-3, 03 DEC 2020 to 31 DEC 2020

NC-3, 03 DEC 2020 to 31 DEC 2020