

WAAS CH 62807 W36A	APP CRS 357°	Rwy Idg TDZE 1048 Apt Elev 1077
--	------------------------	---

RNAV (GPS) RWY 36
DUBUQUE RGNL (DBQ)

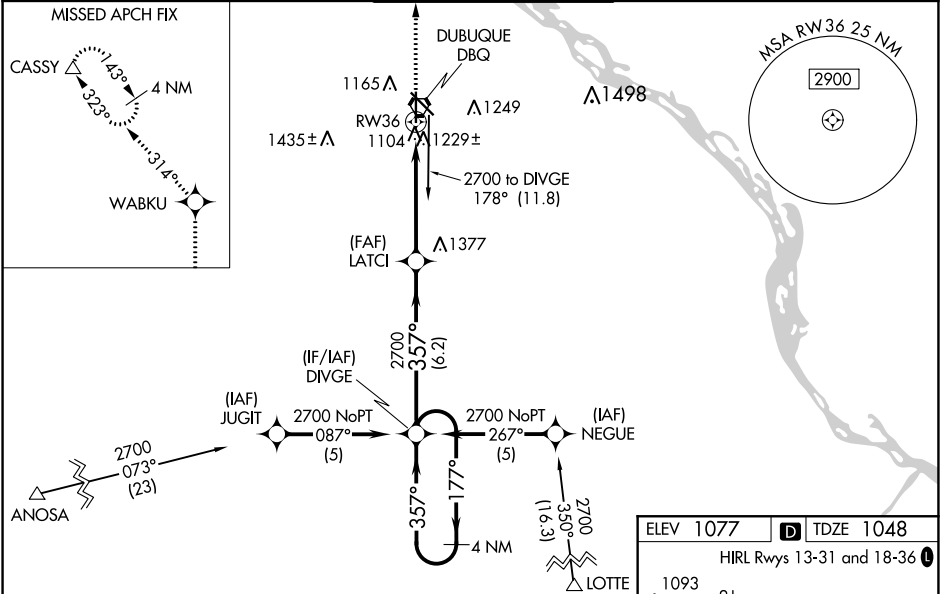
RNP APCH.

For uncompensated Baro-VNAV systems, LNAV/VNAV NA below -17°C or above 46°C. Baro-VNAV and VDP NA when using Monticello altimeter setting. When local altimeter setting not received, use Monticello altimeter setting and increase all DA 88 feet and all MDA 100 feet, increase LNAV/VNAV all Cats, LNAV Cats C and D and Circling Cat C visibility ¼ mile. For inop MALSR when using Monticello altimeter setting, increase LPV all Cats visibility to RVR 5000.
RVR 1800 authorized with use of FD or AP or HUD to DA, NA when using Monticello altimeter setting.

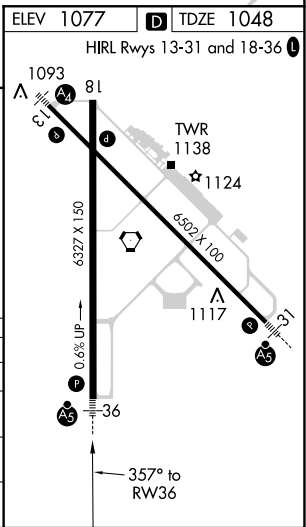
MALSR

MISSED APPROACH:
Climb to 3000 direct WABKU and via 314° track to CASSY and hold.

ATIS 127.25	CHICAGO CENTER 133.95 281.4	DUBUQUE TOWER ★ 119.5 (CTAF) 0 254.4	GND CON 121.8	UNICOM 122.95
-----------------------	---------------------------------------	--	-------------------------	-------------------------



3000	WABKU	CASSY	VGSI and RNAV glidepath not coincident (VGSI Angle 3.00/TCH 51).	
↑	314° tr	△	LATCI	DIVGE
* LNAV only.		4 NM Holding Pattern		
* 1.1 NM to RW36		GP 3.00° TCH 50		
1.1 NM		3.9 NM	6.2 NM	
CATEGORY	A	B	C	D
LPV DA#	1248/24 200 (200-½)			
LNAV/VNAV DA	1525/60 477 (500-1¼)			
LNAV MDA	1480/24	432 (500-½)	1480/40 432 (500-¾)	1480/50 432 (500-1)
CIRCLING	1580-1	503 (600-1)	1600-1½ 523 (600-1½)	1800-2¼ 723 (800-2¼)



NC-3, 03 DEC 2020 to 31 DEC 2020

NC-3, 03 DEC 2020 to 31 DEC 2020