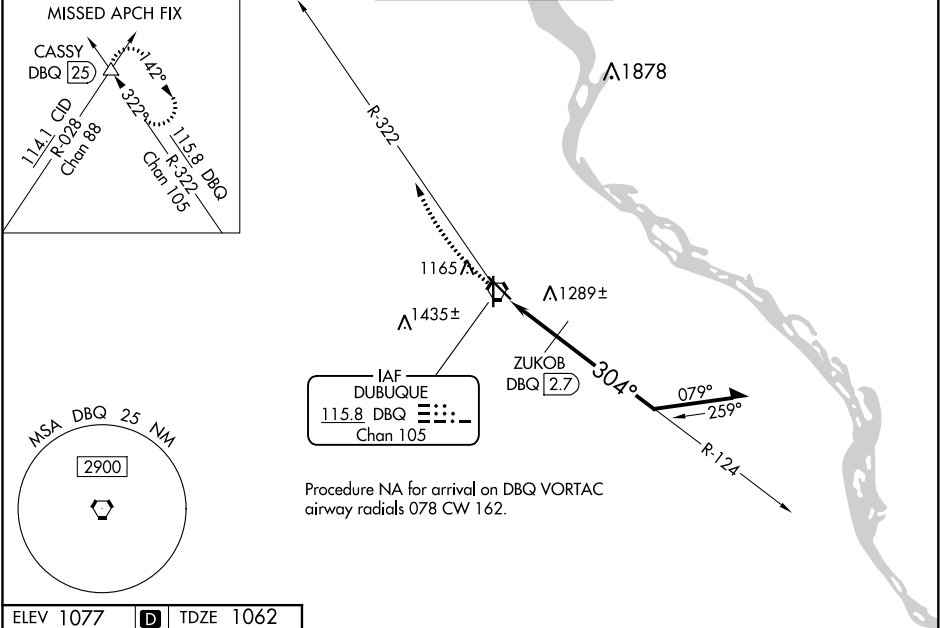


VORTAC DBQ	APP CRS	Rwy Idg	6502
115.8	304°	TDZE	1062
Chan 105		Apt Elev	1077

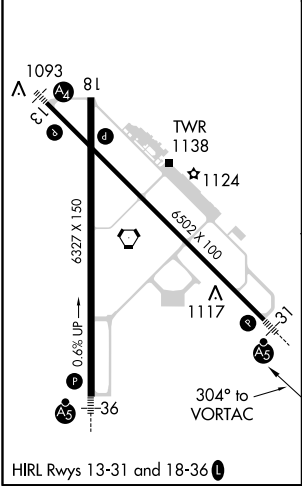
VOR RWY 31
DUBUQUE RGNL (DBQ)

<p>V</p> <p>VOR minimums: For inop ALS, increase S-31 Cats C and D visibility to 2 SM.</p> <p>34</p> <p>-34°C/-29°F</p> <p>ZUKOB fix minimums: For inop ALS, increase S-31 Cats C and D visibility to 1½ SM.</p>	<p>MALSR</p> <p>AS</p>	<p>MISSED APPROACH: Climbing right turn to 3500 on DBQ VORTAC R-322 to CASSY INT/ 25 DME and hold.</p>
--	-------------------------------	--

ATIS 127.25	CHICAGO CENTER 133.95 281.4	DUBUQUE TOWER* 119.5 (CTAF) 0 254.4	GND CON 121.8	UNICOM 122.95
----------------	--------------------------------	--	------------------	------------------



ELEV 1077	D	TDZE 1062
-----------	----------	-----------



3500	CASSY	DBQ VORTAC	Remain within 10 NM	2700
DBQ R-322		DBQ 1.9	ZUKOB DBQ 2.7	
		124°	304°	
		3.07° TCH 57	1820*	
		1.3 NM	0.8 NM	
CATEGORY	A	B	C	D
S-31	1820-½ 758 (800-½)	1820-¾ 758 (800-¾)	1820-1¾ 743 (800-1¾)	758 (800-1¾)
C CIRCLING	1820-1 743 (800-1)	1820-1¼ 743 (800-1¼)	1820-2¼ 743 (800-2¼)	1820-2½ 743 (800-2½)
ZUKOB FIX MINIMUMS				
S-31	1540-½ 478 (500-½)	1540-1 478 (500-1)		
C CIRCLING	1580-1 503 (600-1)	1600-1 523 (600-1)	1600-1½ 523 (600-1½)	1800-2 723 (800-2)