

WAAS CH 61399 W10A	APP CRS 108°	Rwy Idg 6499 TDZE 337 Apt Elev 342
--	------------------------	---

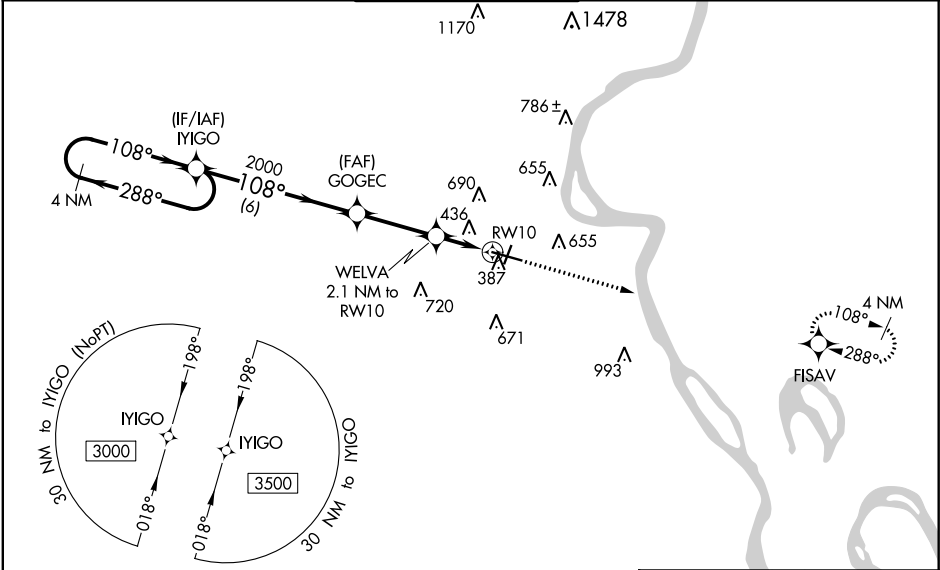
RNAV (GPS) RWY 10
CAPE GIRARDEAU RGNL (CGI)

⚠ For uncompensated Baro-VNAV systems, LNAV/VNAV NA below -17°C (2°F) or above 54°C (130°F). DME/DME RNP-0.3 NA. When local altimeter setting not received, use Cairo Rgnl altimeter setting and increase all DA 48 feet and all MDA 60 feet; increase LNAV Cat C/D visibilities ½ mile and Circling Cat C/D visibility ¼ mile. Baro-VNAV and VDP NA when using Cairo Rgnl altimeter setting. For inop MALS, increase LNAV/VNAV visibility all Cats to ¾ and LNAV Cats C/D visibility to 1 mile. For inop MALS when using Cairo Rgnl altimeter setting, increase LNAV Cats C/D visibility to 1 ½ mile.

MALS

MISSED APPROACH:
Climb to 3000 direct FISAV and hold.

ASOS 120.55	MEMPHIS CENTER 133.65 292.15	CAPE GIRARDEAU TOWER ★ 125.525 (CTAF) 0	GND CON 121.6	UNICOM 122.95
-----------------------	--	---	-------------------------	-------------------------



ELEV **342** **D** TDZE **337**

CATEGORY	A	B	C	D
LPV DA	537-½ 200 (200-½)			
LNAV/VNAV DA	603-½ 266 (300-½)			
LNAV MDA	700-½ 363 (400-½)		700-⅝ 363 (400-⅝)	
CIRCLING	860-1 518 (600-1)	960-1 618 (700-1)	1000-1¾ 658 (700-1¾)	1080-2¼ 738 (800-2¼)

MIRL Rwy 2-20 **0**
HIRL Rwy 10-28 **0**

NC-3, 03 DEC 2020 to 31 DEC 2020

NC-3, 03 DEC 2020 to 31 DEC 2020