

WAAS CH 93832 W02A	APP CRS 023°	Rwy Idg 3996 TDZE 342 Apt Elev 342
--	------------------------	---

RNAV (GPS) RWY 2

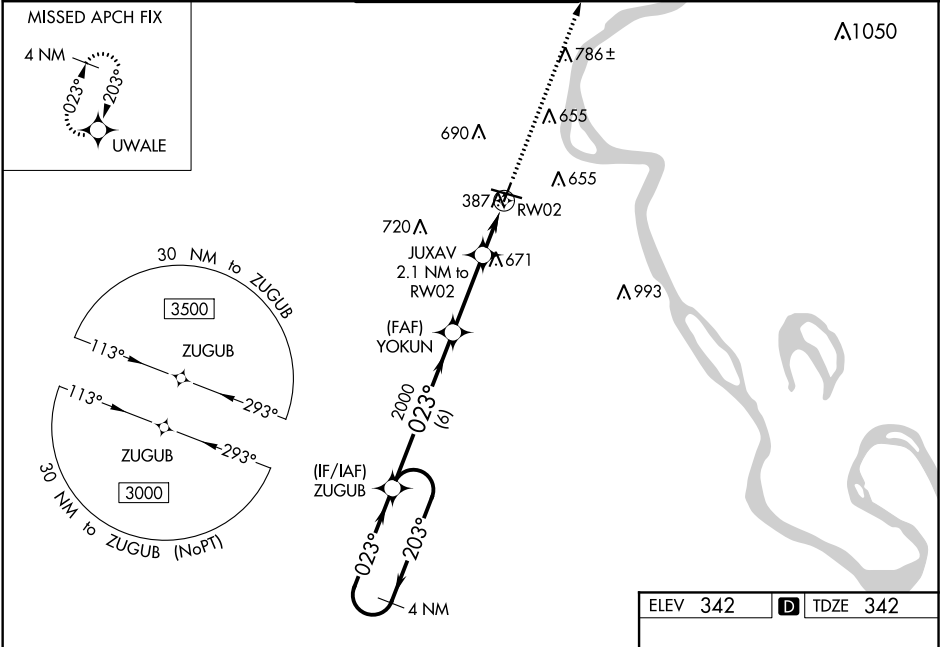
CAPE GIRARDEAU RGNL (CGI)

⚠

For uncompensated Baro-VNAV systems, LNAV/VNAV NA below -17°C (2°F) or above 54°C (130°F). DME/DME RNP-0.3 NA. When local altimeter setting not received, use Cairo Rgnl altimeter setting and increase all DA 48 feet and all MDA 60 feet; increase LPV all Cats, LNAV/VNAV all Cats and LNAV Cat C/D visibilities ½ mile and Circling Cat C/D visibility ¼ mile. Helicopter visibility reduction below ¾ SM NA. Baro-VNAV and VDP NA when using Cairo Rgnl altimeter setting.

MISSED APPROACH: Climb to 3500 direct UWALE and hold, continue climb-in-hold to 3500.

ASOS 120.55	MEMPHIS CENTER 133.65 292.15	CAPE GIRARDEAU TOWER★ 125.525 (CTAF) 0	GND CON 121.6	UNICOM 122.95
-----------------------	--	--	-------------------------	-------------------------



VGSI and RNAV glidepath not coincident (VGSI 4.00/TCH 52).		3500		UWALE
4 NM Holding Pattern		ZUGUB		YOKUN
3000 ← 203°		2000		JUXAV 2.1 NM to RW02
GP 3.00° TCH 40		*1040		*1.3 NM to RW02
6 NM		3 NM		0.8 NM 1.3 NM
CATEGORY	A	B	C	D
LPV DA	784-1½ 442 (500-1½)			
LNAV/VNAV DA	839-1¾ 497 (500-1¾)			
LNAV MDA	940-1	598 (600-1)	940-1¾	598 (600-1¾)
CIRCLING	940-1 598 (600-1)	960-1 618 (700-1)	1000-1¾ 658 (700-1¾)	1080-2¼ 738 (800-2¼)

ELEV 342

TDZE 342

MIRL Rwy 2-20 0
HIRL Rwy 10-28 0

NC-3, 03 DEC 2020 to 31 DEC 2020

NC-3, 03 DEC 2020 to 31 DEC 2020