

WAAS CH 90199 W28A	APP CRS 288°	Rwy Idg 6499 TDZE 341 Apt Elev 342
--	------------------------	---

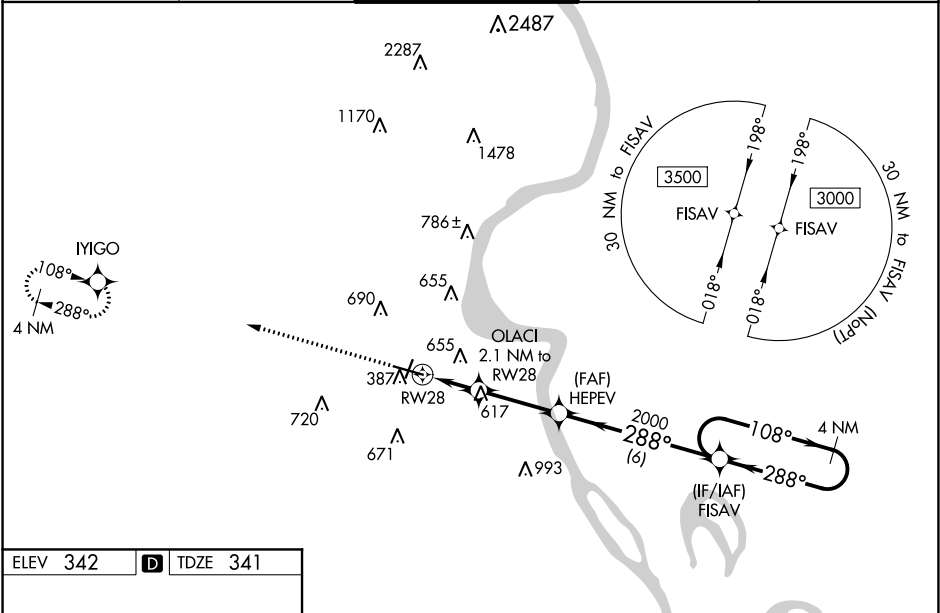
RNAV (GPS) RWY 28
CAPE GIRARDEAU RGNL (CGI)

⚠ DME/DME RNP-0.3 NA. When local altimeter setting not received, use Cairo Rgnl altimeter setting and increase all DA 48 feet and all MDA 60 feet; increase LPV all Cats, LNAV/VNAV all Cats, and Circling Cat C/D visibility 1/4 mile and LNAV Cat C/D visibility 1/2 mile. VDP NA when using Cairo Rgnl altimeter setting. Helicopter visibility reduction below 3/4 SM NA. For inop ODALS, increase LPV all Cats, LNAV/VNAV all Cats and LNAV Cat C/D visibilities 1/2 mile. When using Cairo Rgnl altimeter setting, for inop ODALS, increase LPV all Cats, LNAV/VNAV all Cats and LNAV Cat C/D visibilities 1/2 mile. Baro-VNAV NA.

ODALS

MISSED APPROACH:
Climb to 3000 direct
IYIGO and hold.

ASOS 120.55	MEMPHIS CENTER 133.65 292.15	CAPE GIRARDEAU TOWER ★ 125.525 (CTAF) 0	GND CON 121.6	UNICOM 122.95
-----------------------	--	--	-------------------------	-------------------------



ELEV 342 **D** TDZE 341

MIRL Rwy 2-20 **0**
HIRL Rwy 10-28 **0**

	3000	IYIGO	HEPEV	FISAV	4 NM Holding Pattern
	*LNAV only	OLACI 2.1 NM to RW28	2000	288°	108°
	1.6 NM to RW28	1040	2000	288°	3000
	1.6 NM	0.5 NM	3 NM	6 NM	GP 3.00° TCH 38
CATEGORY	A	B	C	D	
LPV DA	723-1 1/8 382 (400-1 1/8)				
LNAV/VNAV DA	821-1 1/2 480 (500-1 1/2)				
LNAV MDA	880-3/4	539 (600-3/4)	880-1 3/8	539 (600-1 3/8)	
C CIRCLING	880-1 538 (600-1)	960-1 618 (700-1)	1000-1 3/4 658 (700-1 3/4)	1080-2 1/4 738 (800-2 1/4)	