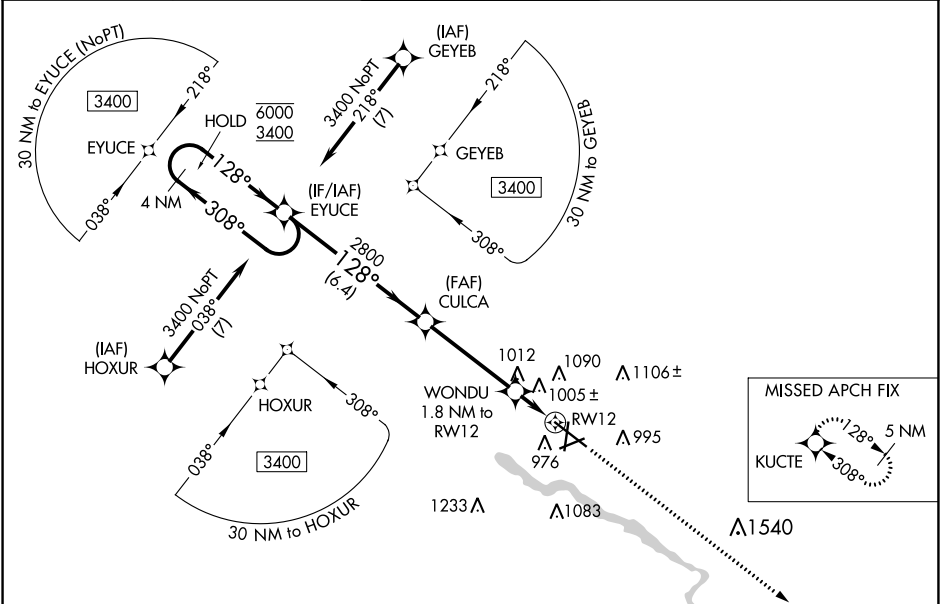


WAAS CH 72801 W12A	APP CRS 128°	Rwy Idg TDZE Apt Elev	8399 873 873
--	------------------------	-----------------------------	---

RNAV (GPS) RWY 12
WATERLOO RGNL (A.L.O)

RNP APCH.	For uncompensated Baro-VNAV systems, LNAV/VNAV NA below -19°C or above 54°C. For inop ALS, increase LNAV/VNAV all Cats to RVR 5500. # RVR 1800 authorized with use of FD or AP or HUD to DA.	MALSR 	MISSED APPROACH: Climb to 3400 direct KUCTE and hold.
-----------	---	-----------	---

ATIS 120.65	WATERLOO APP CON* 118.9 251.15	WATERLOO TOWER* 125.075 (CTAF) 0 257.8	GND CON 121.9 269.1	UNICOM 122.95
-----------------------	--	--	-------------------------------	-------------------------



4 NM Holding Pattern		EYUCE		CULCA		WONDU 1.8 NM to RW12		KUCTE	
6000 ← 308°		3400		2800		1 NM to RW12		*1500	
GP 3.00°		TCH 55							
CATEGORY	A	B	C	D					
LPV DA #	1073/24 200 (200-½)								
LNAV/VNAV DA	1252/30 379 (400-¾)								
LNAV MDA	1260/24 387 (400-½)		1260/35 387 (400-¾)						
CIRCLING	1360-1 487 (500-1)	1400-1 527 (600-1)	1480-1¾ 607 (700-1¾)	1600-2¼ 727 (800-2¼)					
WATERLOO, IOWA Amdt 1 13SEP18									
WATERLOO RGNL (A.L.O) RNAV (GPS) RWY 12									

NC-3, 03 DEC 2020 to 31 DEC 2020

NC-3, 03 DEC 2020 to 31 DEC 2020