

WAAS CH 99615 W12A	APP CRS 125°	Rwy Idg TDZE 1128 Apt Elev 1157
--	------------------------	---

RNAV (GPS) RWY 12

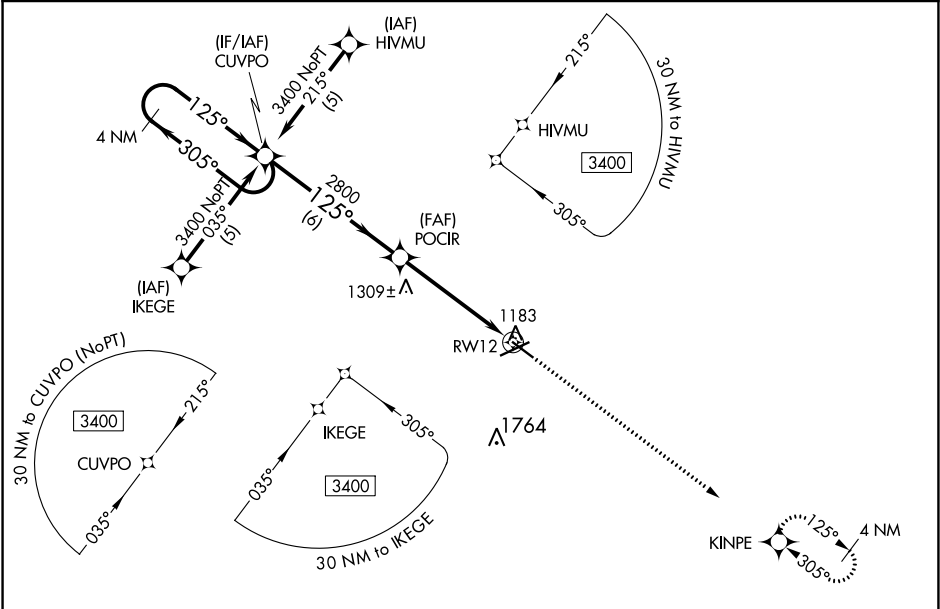
FORT DODGE RGNL (FOD)

⚠

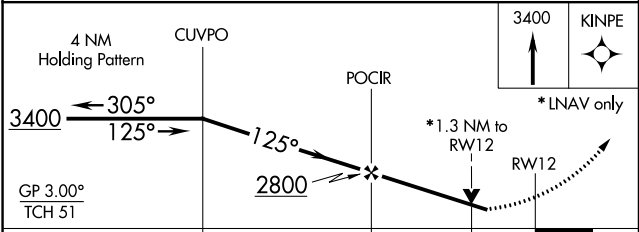
For uncompensated Baro-VNAV systems, LNAV/VNAV NA below -17°C (2°F) or above 54°C (130°F). DME/DME RNP-0.3 NA. Visibility reduction by helicopters NA. When local altimeter setting not received, use Webster City altimeter setting and increase all DA 42 feet and all MDA 60 feet, increase LPV visibility all Cats ¼ mile. VDP and Baro-VNAV NA when using Webster City altimeter setting.

MISSED APPROACH: Climb to 3400 direct KINPE and hold.

AWOS-3PT 118.775	MINNEAPOLIS CENTER 134.0 288.3	UNICOM 123.0 (CTAF) 1
----------------------------	--	---------------------------------



ELEV 1157	TDZE 1128
-----------	-----------



CATEGORY	A	B	C	D
LPV DA	1405-1	277 (300-1)		
LNAV/VNAV DA	1453-1¼	325 (300-1¼)		
LNAV MDA	1560-1	432 (500-1)	1560-1¼ 432 (500-1¼)	1560-1½ 432 (500-1½)
CIRCLING	1560-1 403 (500-1)	1620-1 463 (500-1)	1620-1½ 463 (500-1½)	1720-2 563 (600-2)

