

WAAS CH 45815 W24A	APP CRS 243°	Rwy Idg TDZE Apt Elev	6547 1156 1157
----------------------------------------	------------------------	-----------------------------	-------------------------------------------

RNAV (GPS) RWY 24

FORT DODGE RGNL (FOD)

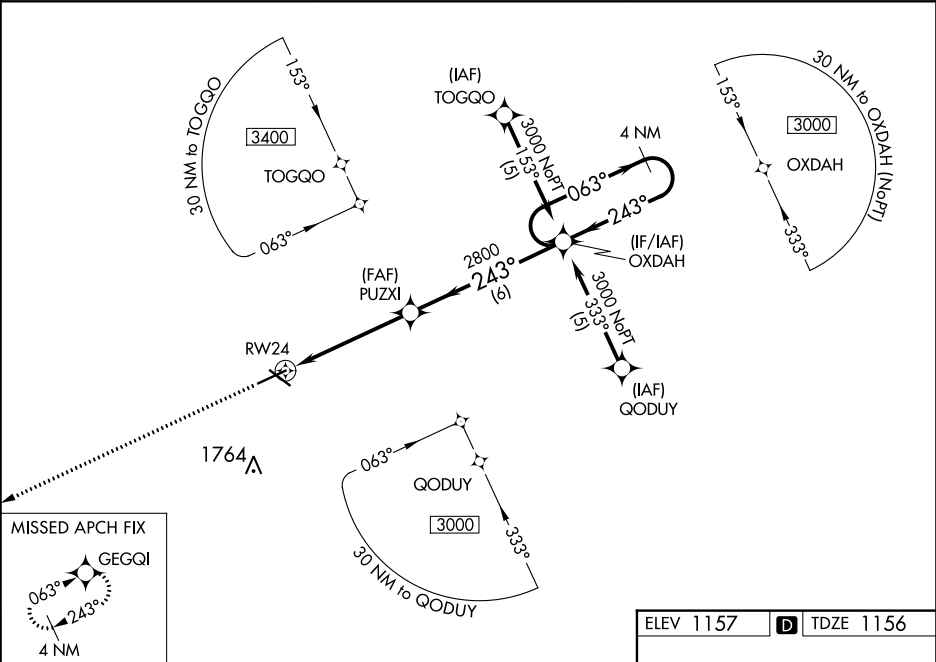
RNP APCH

▼

Baro-VNAV and VDP NA when using Webster City altimeter setting. For uncompensated Baro-VNAV systems, LNAV/VNAV NA below -17°C or above 46°C. When local altimeter setting not received, use Webster City altimeter setting and increase all DA 42 feet and all MDA 60 feet, increase LNAV Cats C and D visibility ¼ mile.

MISSED APPROACH:
Climb to 3000 direct GEGQI and hold.

AWOS-3PT 118.775	MINNEAPOLIS CENTER 134.0 288.3	UNICOM 123.0 (CTAF) 1
----------------------------	------------------------------------------	---------------------------------



3000 GEGQI

VGSI and RNAV glidepath not coincident (VGSI Angle 3.00/TCH 41).

*INAV only.

RW24

1.1 NM

3.8 NM

6 NM

OXDAH

4 NM Holding Pattern

3000

2800

243°

063°

243°

GP 3.00° TCH 50

CATEGORY	A	B	C	D
LPV DA	1406-1 250 (300-1)			
INAV/VNAV DA	1504-1¼ 348 (400-1¼)			
INAV MDA	1560-1	404 (500-1)	1560-1½ 404 (500-1½)	1560-1¼ 404 (500-1¼)
CIRCLING	1560-1 403 (500-1)	1620-1 463 (500-1)	1620-1½ 463 (500-1½)	1720-2 563 (600-2)

ELEV 1157 D TDZE 1156

243° to RW24

1254

6547 x 150

3301 x 100

1.2% UP

0.6% UP

HIRL Rwy 6-24 1

MIRL Rwy 12-30 1

REIL Rws 12, 24 and 30 1