

VOR TBN	APP CRS	Rwy Idg	5510
110.0	329°	TDZE	1153
		Apt Elev	1160

VOR RWY 33

WAYNESVILLE-ST ROBERT RGNL FORNEY FIELD (TBN)

DME or RADAR required. RADAR required for procedure entry.

▼

⚠

When local altimeter not received, use Rolla National altimeter setting and increase all MDAs 80 feet. Increase S-33 Cats C/D visibility to 1¼ SM. Procedure NA when R-4501B or R-4501H in use. Circling NA west of Rwy 15-33. Rwy 33 helicopter visibility reduction below ¾ SM NA. Inop table does not apply to Cats A and B. For inop ALS, increase Cats C and D visibility to 1¾ SM. Inop table does not apply to Cats A and B when using Rolla National altimeter setting.

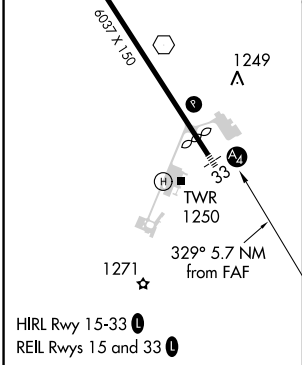
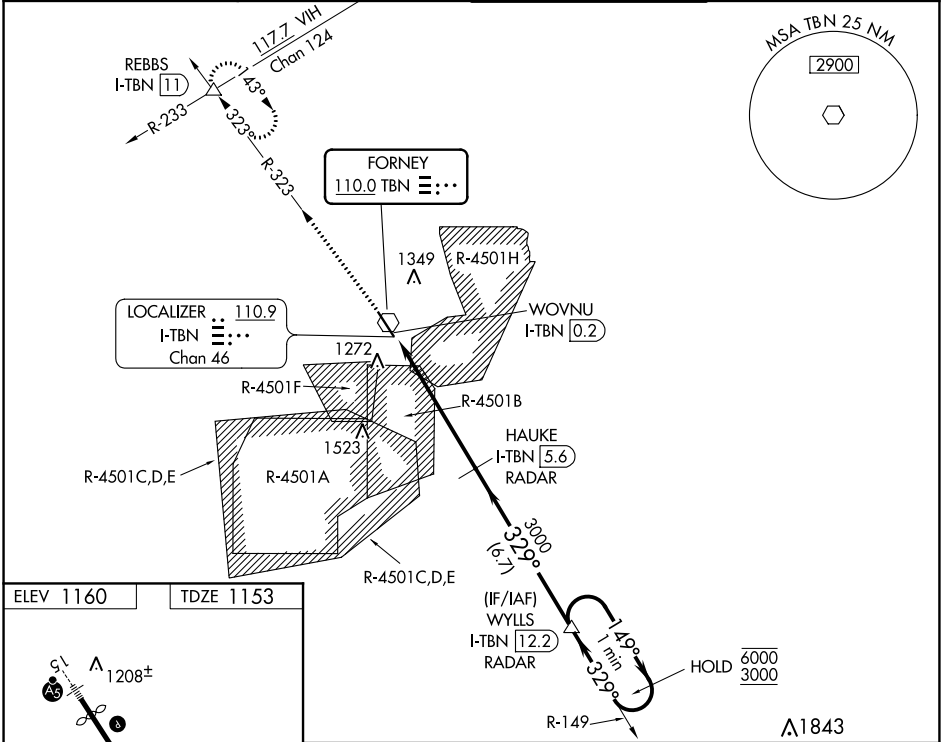
MALS

Ⓜ

Ⓜ

MISSED APPROACH: Climb to 3000 on TBN VOR R-323 to REBBS INT/I-TBN LOC/DME 11 DME and hold.

D-ATIS	KANSAS CITY CENTER	FORNEY TOWER ★	GND CON
118.7 229.4	128.35 284.675	125.4 (CTAF) 0 268.7	123.75 256.8



3000	REBBS	HAUKE	WYLLS	One Minute Holding Pattern	
TBN R-323	△	I-TBN [5.6] RADAR	I-TBN [12.2] RADAR		
	I-TBN DME ANTENNA				
	WOVNU I-TBN [0.2]	I-TBN [1.2]			
		≤ 3.00° TCH 36			
	← 1.3 NM	4.4 NM	6.7 NM		
CATEGORY	A	B	C	D	
S-33	1600-1 447 (500-1)				
CIRCLING	1600-1 440 (500-1)	1660-1 500 (500-1)	1660-1½ 500 (500-1½)	1720-2 560 (600-2)	

NC-3, 03 DEC 2020 to 31 DEC 2020

NC-3, 03 DEC 2020 to 31 DEC 2020