

WAAS CH 86936 W14A	APP CRS 141°	Rwy Idg 5600 TDZE 953 Apt Elev 953
--	------------------------	---

RNAV (GPS) RWY 14

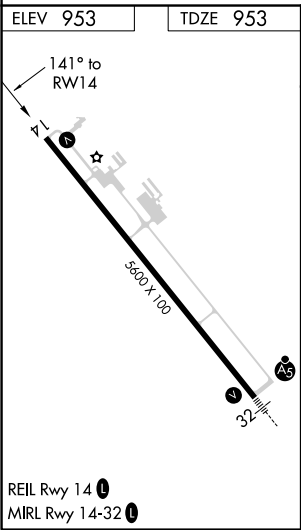
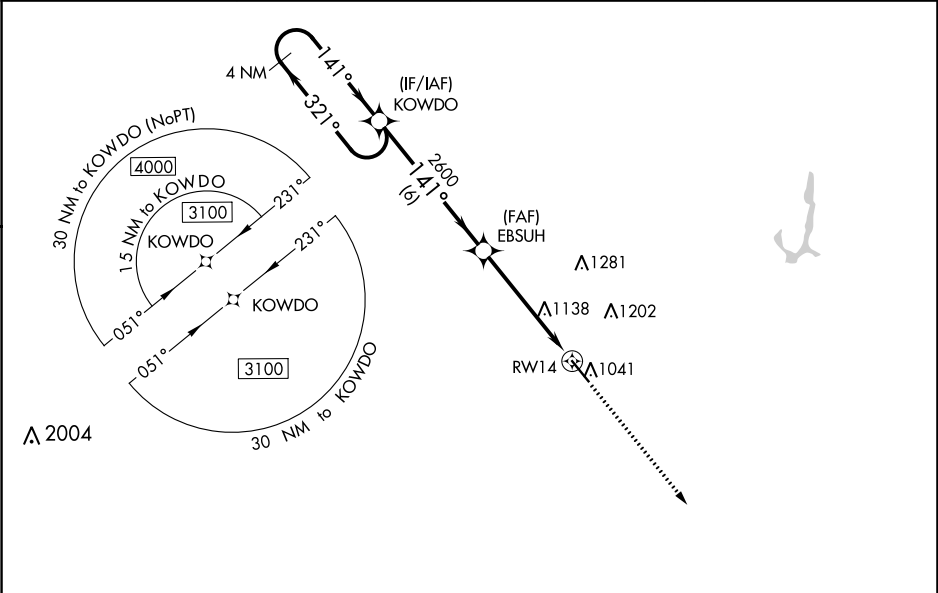
NEWTON MUNI-EARL JOHNSON FIELD (TNU)

⚠

DME/DME RNP-0.3 NA. When local altimeter setting not received use Des Moines altimeter setting and increase all DA/MDA 80 feet; increase LPV and LNAV/VNAV all Cats and LNAV Cats C/D and Circling Cat C/D visibility ¼ mile. For uncompensated Baro-VNAV systems, LNAV/VNAV NA below -13°C (9°F) or above 54°C (130°F). Rwy 14 helicopter visibility reduction below ¾ SM NA. Baro-VNAV and VDP NA when using Des Moines altimeter setting.

MISSED APPROACH: Climb to 2700 direct UBHIT and hold.

AWOS-3 132.275	DES MOINES APP CON 123.9 307.15	CLNC DEL 126.3	UNICOM 122.8 (CTAF) 0
--------------------------	---	--------------------------	---------------------------------



UBHIT

141°

321°

4 NM

4 NM Holding Pattern		KOWDO	EBSUH	2700	UBHIT
3100		321°	141°	2600	
GP 3.00°					
TCH 39					
		6 NM	3.8 NM	1.3 NM	
CATEGORY	A	B	C	D	
LPV DA	1203- ⁷ / ₈		250 (300- ⁷ / ₈)		
LNAV/VNAV DA	1203- ⁷ / ₈		250 (300- ⁷ / ₈)		
LNAV MDA	1420-1	467 (500-1)	1420-1 ³ / ₈	467 (500-1 ³ / ₈)	
CIRCLING	1420-1	1440-1 ¹ / ₂	1520-1 ¹ / ₂	1600-2	
	467 (500-1)	487 (500-1 ¹ / ₂)	567 (600-1 ¹ / ₂)	647 (700-2)	