

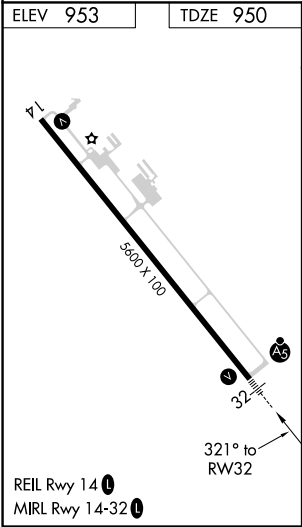
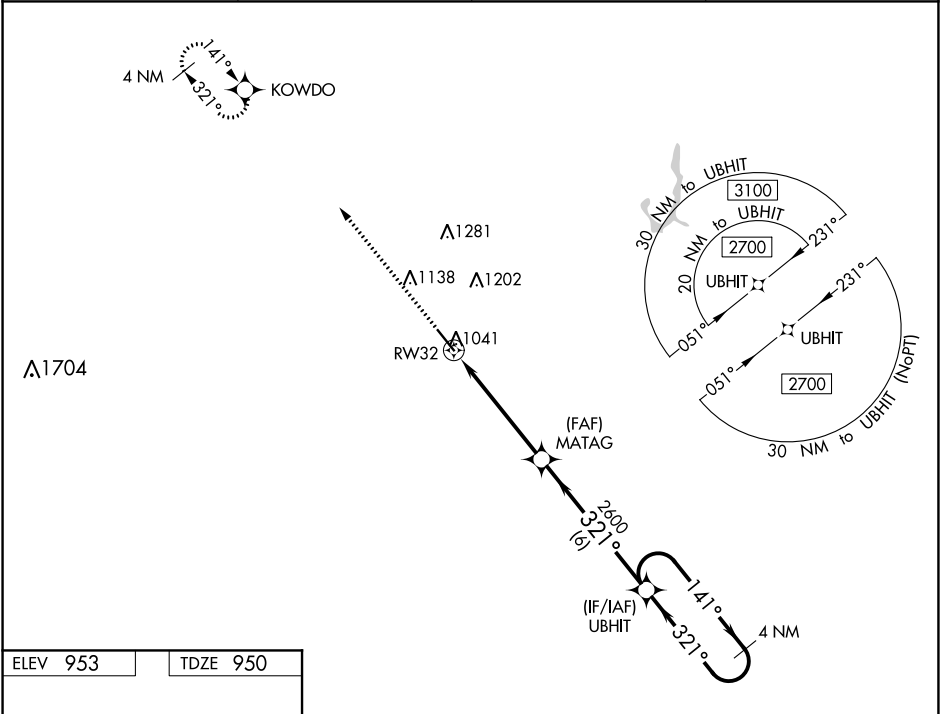
WAAS CH 99702 W32A	APP CRS 321°	Rwy Idg TDZE Apt Elev	5600 950 953
--	------------------------	-----------------------------	---

RNAV (GPS) RWY 32

NEWTON MUNI-EARL JOHNSON FIELD (TNU)

<div><div>⚠</div><div>⚠</div></div> <div>For uncompensated Baro-VNAV systems, LNAV/VNAV NA below -19°C (2°F) or above 54°C (130°F). DME/DME RNP-0.3 NA. For inop MALSR, increase LNAV/VNAV all Cats visibility to ¾ SM.</div>	<div><div>MALSR</div><div></div></div> <div>MISSED APPROACH: Climb to 3100 direct KOWDO and hold.</div>
---	---

AWOS-3 132.275	DES MOINES APP CON 123.9 307.15	CLNC DEL 126.3	UNICOM 122.8 (CTAF) 0
--------------------------	---	--------------------------	---------------------------------



3100	KOWDO	VGSI and RNAV glidepath not coincident (VGSI Angle 3.00/TCH 49).	UBHIT	4 NM Holding Pattern
*LNAV only	MATAG	2600	321°	2700
*1.3 NM to RW32	2600	321°	2600	GP 3.00° TCH 59
1.3	3.7 NM	6 NM		
CATEGORY	A	B	C	D
LPV DA	1150-½	200 (200-½)		
LNAV/VNAV DA	1202-½	252 (300-½)		
LNAV MDA	1400-½	450 (500-½)	1400-7/8	450 (500-7/8)
CIRCLING	1420-1 467 (500-1)	1440-1 487 (500-1)	1520-1½ 567 (600-1½)	1600-2 647 (700-2)