





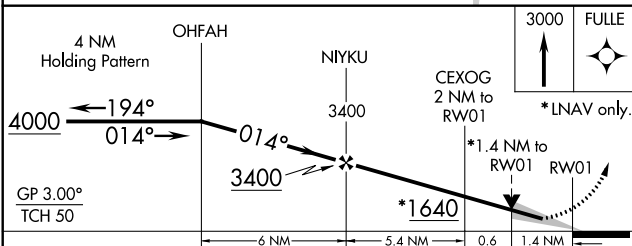
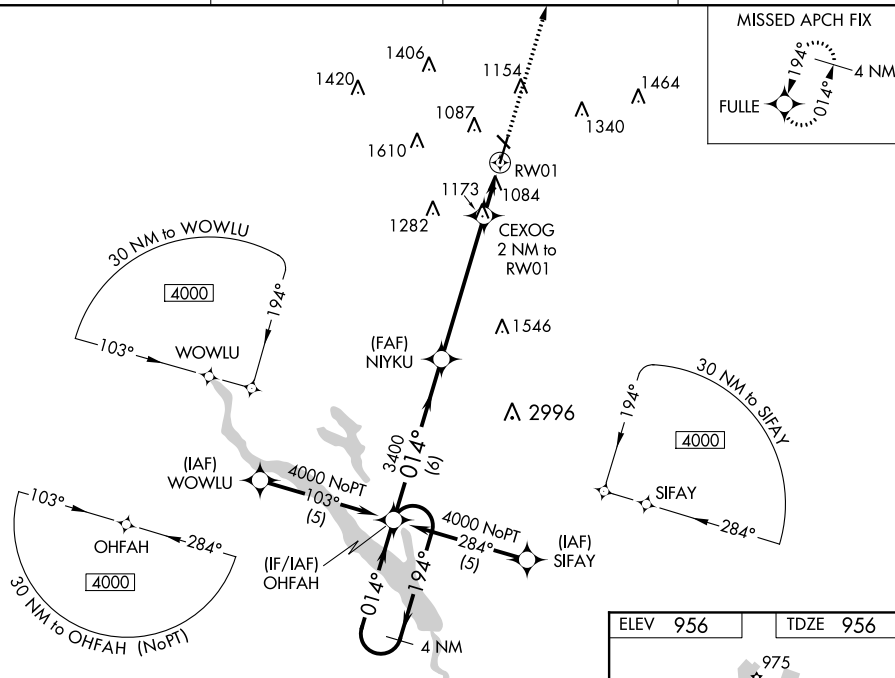
RNAV (GPS) RWY 1  
AMES MUNI (AMW)

 For uncompensated Baro-VNAV systems, LNAV/VNAV NA below -16°C (4°F) or above 54°C (130°F). For inop MALSR, increase LNAV Cats A, B visibility to 1 mile. Circling Rwy 31 NA at night.

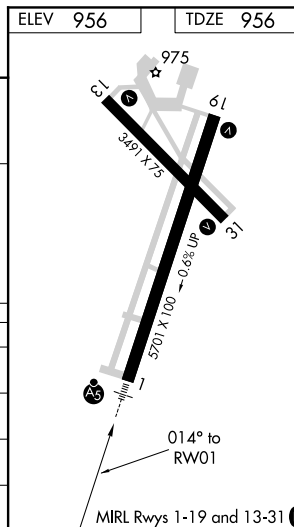
MALSR

MISSED APPROACH: Climb to 3000  
direct FULLE and hold.

ASOS <b>132.025</b>	DES MOINES APP CON <b>123.9 307.15</b>	CLNC DEL <b>126.0</b> 	UNICOM <b>122.7</b> (CTAF)  
------------------------	---	--	---



CATEGORY		A	B	C	D
LPV	DA	1261 <sup>-3/4</sup> 305 (400- <sup>3/4</sup> )			NA
LNAV/ VNAV	DA	1364-1 408 (500-1)			NA
LNAV	MDA	1440 <sup>-3/4</sup> 484 (500- <sup>3/4</sup> )			NA
CIRCLING		1440-1 484 (500-1)		1460-1 <sup>1/2</sup> 504 (600-1 <sup>1/2</sup> )	NA



NC-3, 03 DEC 2020 to 31 DEC 2020