

WAAS  
CH **61217**  
**W19A**

APP CRS  
**194°**

Rwy Idg  
TDZE  
Apt Elev

**5701**  
**937**  
**956**

**RNAV (GPS) RWY 19**

AMES MUNI (AMW)

RNP APCH.

▼

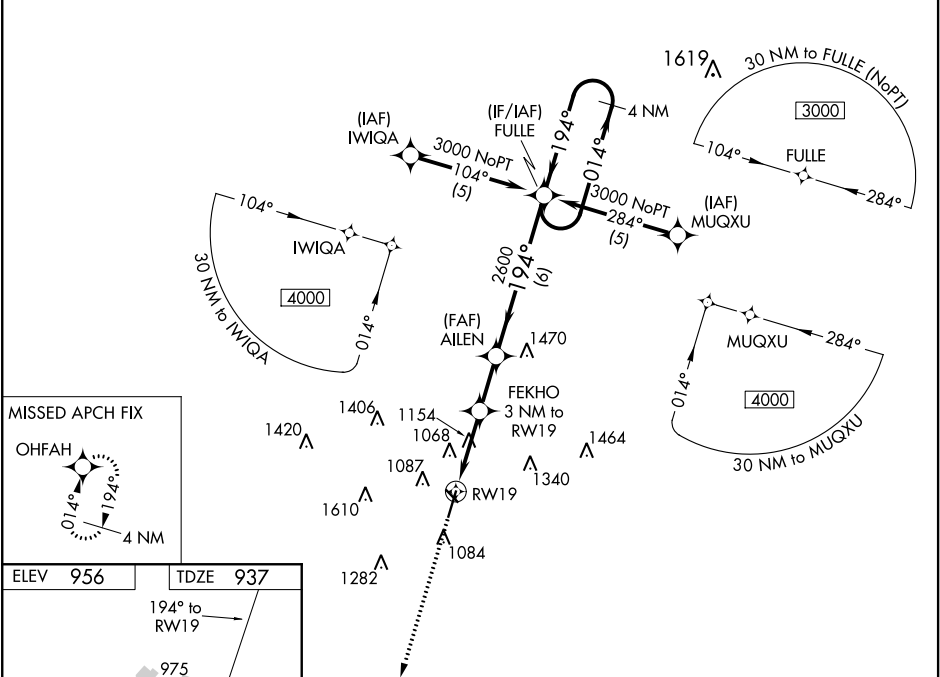
▲

❄

Baro-VNAV and VDP NA when using Ankeny altimeter setting. For uncompensated Baro-VNAV systems, LNAV/VNAV NA below -16°C or above 54°C. Rwy 19 helicopter visibility reduction below ¾ SM NA. When local altimeter setting not received, use Ankeny altimeter setting and increase all DA 49 feet and LNAV/VNAV all Cats visibility ¼ mile, increase all MDA 60 feet and LNAV Cat C visibility ¼ mile.

MISSED APPROACH: Climb to 4000 direct OHFAH and hold.

ASOS <b>132.025</b>	DES MOINES APP CON <b>123.9 307.15</b>	CLNC DEL <b>126.00</b>	UNICOM <b>122.7</b> (CTAF)  
------------------------	---	---------------------------	---



4000

↑

OHFAH

✦

VGSI and RNAV glidepath not coincident (VGSI Angle 4.00/TCH 41).

\*LNAV only.

RW19

1.1 NM to RW19

FEKHO 3 NM to RW19

AILEN 2600

1920\*

194°

014°

2600

3000

GP 3.00°

TCH 48

1.1 NM

1.9 NM

2.1 NM

6 NM

CATEGORY	A	B	C	D
LPV DA	1187-1 250 (300-1)			NA
LNAV/VNAV DA	1352-1½ 415 (400-1½)			NA
LNAV MDA	1420-1 483 (500-1)		1420-1⅜ 483 (500-1⅜)	NA

MIRL Rwy's 1-19 and 13-31