

LOC I-SPW	APP CRS	Rwy Idg	6001
110.9	121°	TDZE	1339
		Apt Elev	1339

ILS or LOC RWY 12

SPENCER MUNI (SPW)

▼

NA

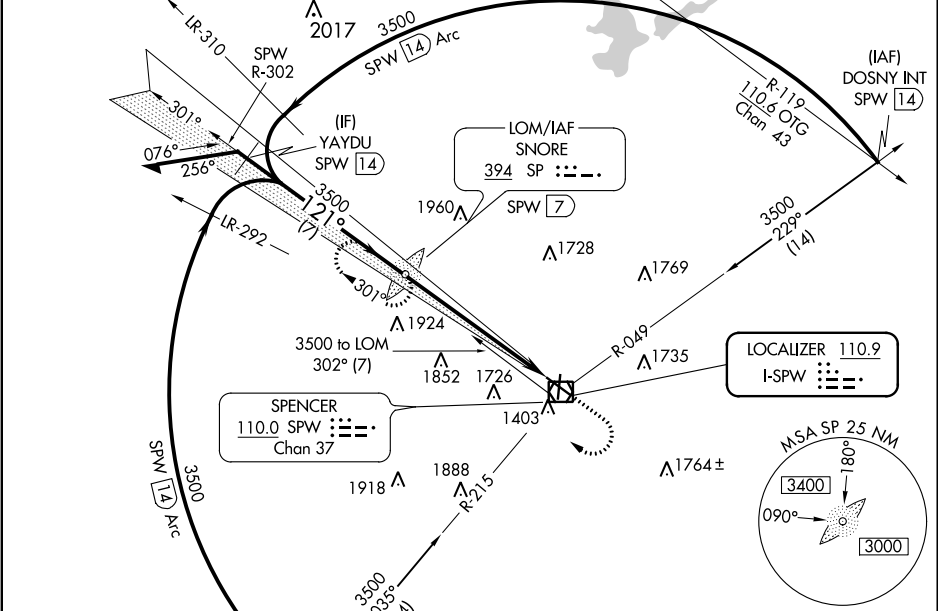
✖-32°C

For Inop ALS, increase S-LOC 12 Cats C/D visibility to 1½ SM. When local altimeter setting not received, use Estherville altimeter setting: increase DA and all MDAs 60 feet, increase visibility S-LOC 12 Cats C and D and Circling Cats C and D ¼ SM. For inop ALS, when using Estherville altimeter setting, increase S-ILS 12 all Cats visibility to 1 SM and S-LOC 12 Cats C/D visibility to 1½ SM. ADF or DME required.

MALSR

MISSED APPROACH: Climb to 3500 then right turn direct SPW VOR/DME, then via SPW VOR/DME R-302 to SNORE LOM/SPW VOR/DME 7 DME and hold.

ASOS	MINNEAPOLIS CENTER	UNICOM
126.625	127.75 257.7	123.0 (CTAF) 0



ELEV 1339

TDZE 1339

Remain within 10 NM

3500

121°

3424

3500

GS 3.00° TCH 53

6.3 NM

SPW 0.7

VGSI and ILS glidepath not coincident (VGSI Angle 3.00/TCH 45).

SPW

SPW R-302

SP

CATEGORY	A	B	C	D
S-ILS 12	1539-½ 200 (200-½)			
S-LOC 12	1840-½ 501 (600-½)		1840-1 501 (600-1)	
CIRCLING	1840-1 501 (600-1)		2100-2¼ 761 (800-2¼)	2100-2½ 761 (800-2½)

REIL Rwy 18, 30 and 36

MIRL Rwy 12-30 and 18-36

FAF to MAP 6.3 NM

Knots	60	90	120	150	180
Min:Sec	6:18	4:12	3:09	2:31	2:06

121° 6.3 NM from FAF

81

1389

36

NC-3, 03 DEC 2020 to 31 DEC 2020

NC-3, 03 DEC 2020 to 31 DEC 2020