

WAAS CH <b>63101</b> <b>W04A</b>	APP CRS <b>038°</b>	Rwy Idg TDZE <b>967</b> Apt Elev <b>971</b>
--	------------------------	---

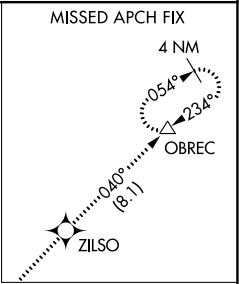
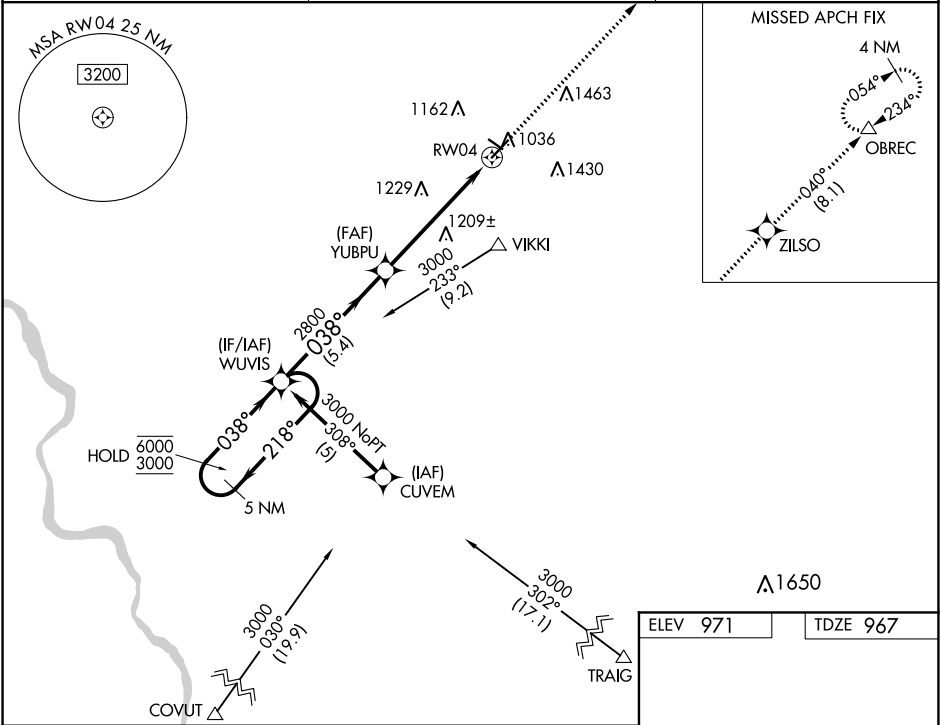
RNAV (GPS) RWY 4  
SHENANDOAH MUNI (SDA)

RNP APCH.

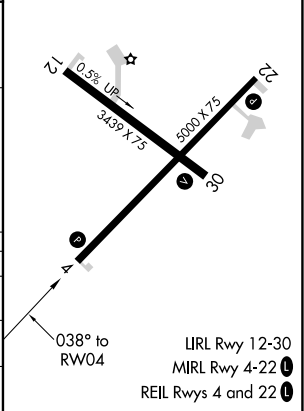
**⚠** Circling Rwy 30 NA at night. VDP NA when using Clarinda altimeter setting. Rwy 4 helicopter visibility reduction below 3/4 SM NA. When local altimeter setting not received, use Clarinda altimeter setting: increase DA to 1275 feet; increase all MDAs 60 feet.

MISSED APPROACH: Climb to 3000 direct ZILSO and on track 040° to OBREC and hold.

AWOS-3 <b>125.525</b>	OMAHA APP CON <b>124.5 263.0</b>	UNICOM <b>122.8 (CTAF) 0</b>
--------------------------	-------------------------------------	---------------------------------



VGSI and RNAV glidepath not coincident (VGSI Angle 3.00/TCH 35).		3000	ZILSO	tr 040°	OBREC
5 NM Holding Pattern		WUVIS			
6000 ← 218°		3000 → 038°	038°		
GP 3.00° TCH 40			2800		
		5.4 NM	4.2 NM	1.4 NM	
CATEGORY	A	B	C	D	
LPV DA	1230-1	263 (300-1)	NA		
LPV MDA	1460-1	493 (500-1)	NA		
CIRCLING	1520-1	549 (600-1)	NA		



NC-3, 03 DEC 2020 to 31 DEC 2020

NC-3, 03 DEC 2020 to 31 DEC 2020