

WAAS CH <b>82304</b> <b>W34A</b>	APP CRS <b>349°</b>	Rwy Idg <b>4797</b> TDZE <b>1319</b> Apt Elev <b>1319</b>
--	------------------------	---

RNAV (GPS) RWY 34  
ESTHERVILLE MUNI (EST)

RNP APCH.

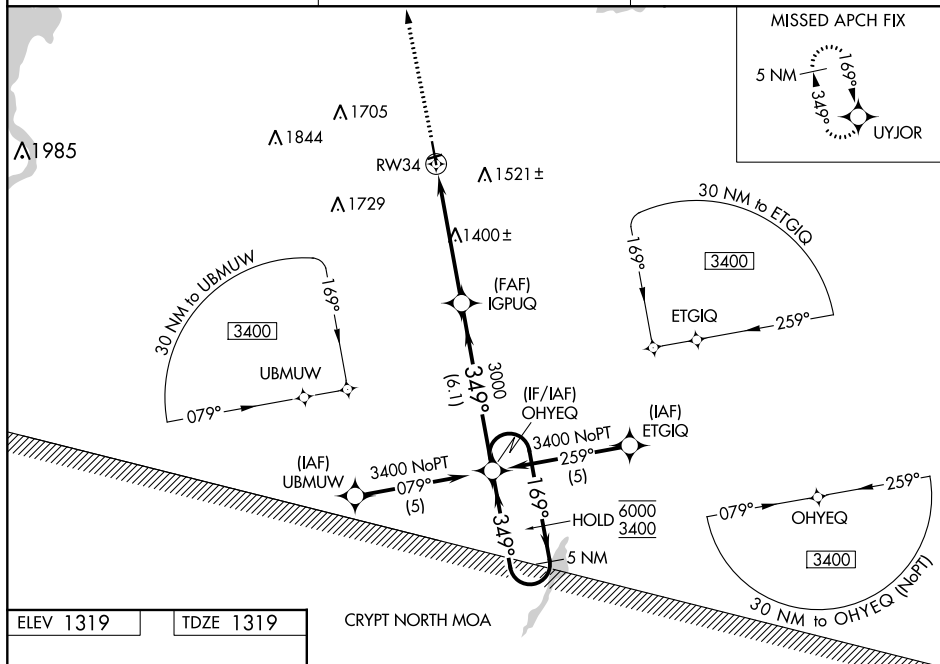
**A** Circling NA to Rwy 6 and 24. Baro-VNAV and VDP NA when using Jackson altimeter setting. For uncompensated Baro-VNAV systems, LNAV/VNAV NA below -17°C or above 54°C. When local altimeter not received, use Jackson altimeter setting and increase all DA/MDA 60 feet.

MISSED APPROACH: Climb to 3400  
direct UYJOR and hold.

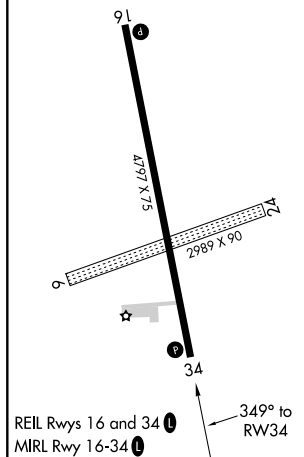
ASOS  
121.425

MINNEAPOLIS CENTER  
127.75 257.7

UNICOM  
122.8 (CTAF) **L**



ELEV 1319		TDZE 1319
-----------	--	-----------



**VGSI and RNAV glidepath not coincident.**

CATEGORY	A	B	C	D
LPV DA	1569-1	250 (300-1)		NA
LNAV/VNAV DA	1629-1	310 (400-1)		NA
LNAV MDA	1700-1	381 (400-1)		NA
<b>CIRCLING</b>	1720-1 401 (500-1)	1840-1 521 (600-1)		NA