

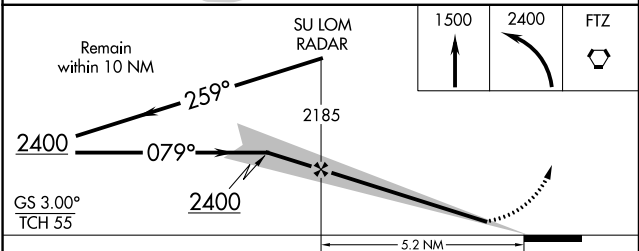
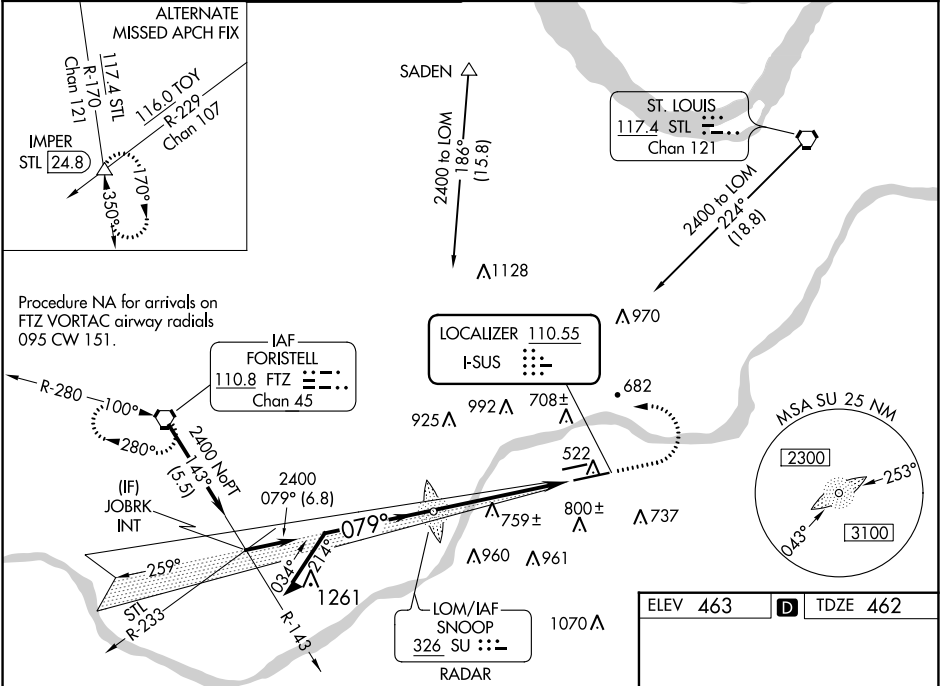
| | | |
|----------------------------|------------------------|---|
| LOC I-SUS 110.55 | APP CRS 079° | Rwy Idg TDZE 462 Apt Elev 463 |
|----------------------------|------------------------|---|

ILS or LOC RWY 8R
SPIRIT OF ST LOUIS (SUS)

When local alimeter setting not received, use St Louis Lambert Intl alimeter setting and increase all DA to 719 feet, all MDA 60 feet, increase S-LOC 8R Cats C/D to RVR 5000 and Circling Cat C visibility ¼ mile. For inop MALSRR, increase S-LOC 8R Cats C/D visibility to RVR 6000. For inop MALSRR when using St Louis Lambert Intl alimeter setting, increase S-LOC 8R Cats C/D visibility to 1½ mile.
*RVR 1800 authorized with the use of FD or AP or HUD to DA (NA when using St Louis Lambert Intl alimeter setting).

MALSRR
MISSED APPROACH: Climb to 1500 then climbing left turn to 2400 direct FTZ VORTAC and hold.

| | | | | | | |
|----------------------|---|---|-------------------------|--------------------------|---|-------------------------|
| ATIS 134.8 | ST. LOUIS APP CON 126.5 254.3 | SPIRIT TOWER* 124.75 (CTAF) 0 257.2 | GND CON 121.7 | CLNC DEL 133.1 | ST. LOUIS CLNC DEL 121.7 (when tower closed) | UNICOM 122.95 |
|----------------------|---|---|-------------------------|--------------------------|---|-------------------------|



| | | | | |
|------------|--------------------|-------------|-------------------------|-------------------------|
| CATEGORY | A | B | C | D |
| S-ILS 8R * | 662/24 200 (200-½) | | | |
| S-LOC 8R | 880/24 | 418 (500-½) | 880/40 | 418 (500-¾) |
| CIRCLING | 1100-1 | 637 (700-1) | 1120-1¾ 657 (700-1¾) | 1140-2¼ 677 (700-2¼) |

