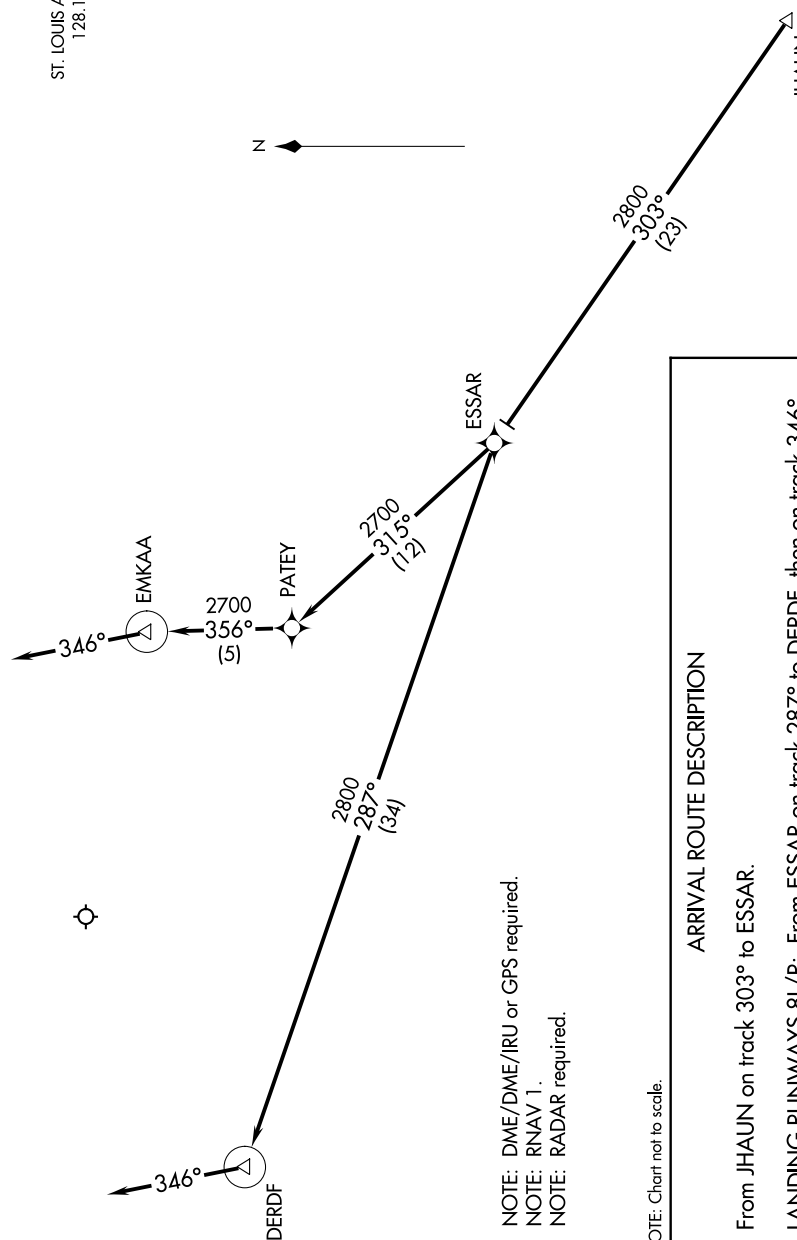


ATIS
134.8
ST. LOUIS APP CON
128.1 307.05



JHAUN Δ
VERTICAL NAVIGATION
PLANNING INFORMATION
Expect 12000

ARRIVAL ROUTE DESCRIPTION

From JHAUN on track 303° to ESSAR.

LANDING RUNWAYS 8L/R: From ESSR on track 287° to DERDF, then on track 346°, expect RADAR vectors prior to DERDF.

LANDING RUNWAYS 26L/R: From ESSAR on track 315° to PATEY, then on track 356° to EMKAA, then on track 346°, expect RADAR vector prior to EMKAA.

NOTE: Chart not to scale.

NOTE: DME/DME/IRU or GPS required.
NOTE: RNAV 1.
NOTE: RADAR required.