

WAAS CH 61114 W08B	APP CRS 079°	Rwy Idg TDZE 462 Apt Elev 463
--	------------------------	---

RNAV (GPS) RWY 8R

SPIRIT OF ST LOUIS (SUS)

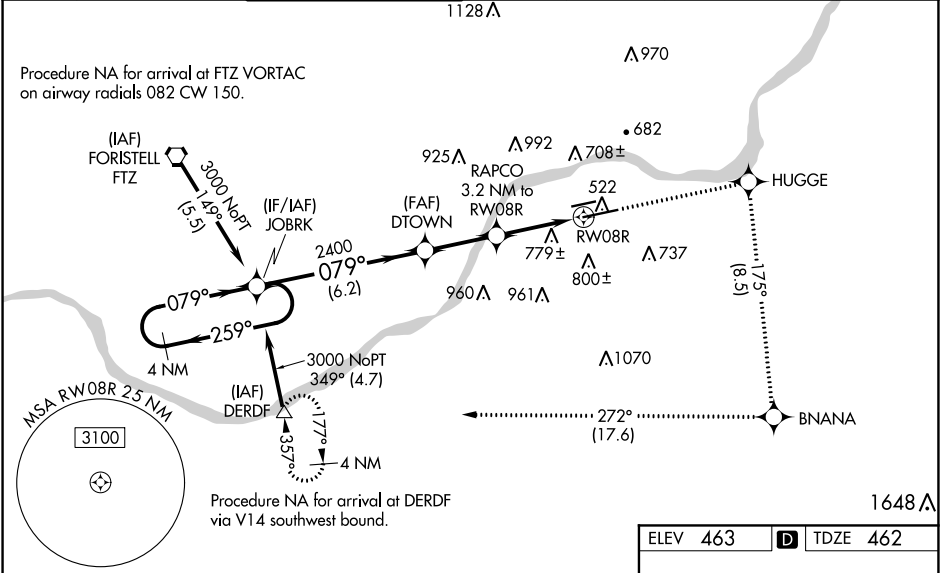
⚠ For uncompensated Baro-VNAV systems, LNAV/VNAV NA below -15°C (5°F) or above 54°C (130°F). DME/DME RNP-0.3 NA. Baro-VNAV and VDP NA when using St Louis Lambert Intl altimeter setting. When local altimeter setting not received, use St Louis Lambert Intl altimeter setting and increase all DA 57 feet all MDA 60 feet, increase visibility LNAV/VNAV all Cats and LNAV Cats C/D ½ mile, and Circling Cat C ¼ mile. For inop MALS, increase LNAV/VNAV all Cats visibility to 2½ mile and LNAV Cats C/D visibility to 1½ mile. For inop MALS when using St Louis Lambert Intl altimeter setting, increase LNAV Cats C/D visibility to 1¾ mile. # RVR 1800 authorized with use of FD or AP or HUD to DA, NA when using St Louis Lambert Intl altimeter setting.

MALS



MISSED APPROACH:
Climb to 3000 direct HUGGE and right turn on track 175° to BNANA and right turn on track 272° to DERDF and hold.

ATIS 134.8	ST. LOUIS APP CON 126.5 254.3	SPIRIT TOWER* 124.75 (CTAF) 0 257.2	GND CON 121.7	CLNC DEL 133.1	ST. LOUIS CLNC DEL 121.7 (when tower closed)	UNICOM 122.95
----------------------	---	---	-------------------------	--------------------------	---	-------------------------



4 NM Holding Pattern		JOBRK	<div><div>3000 ↑</div><div>HUGGE ✧</div><div>BNANA ✧</div><div>DERDF △</div></div>			
GP 3.00° TCH 55		DTOWN	RAPCO	*LNAV only		
3000 ← 259° 079° →		2400	3.2 NM to RW08R	*1.6 NM to RW08R		
		2400	*1540	RW08R		
		6.2 NM	2.6 NM	1.6 NM	1.6 NM	
CATEGORY	A	B	C	D		
LPV DA#	662/24		200 (200-½)			
LNAV/VNAV DA	1129-1⅞		667 (700-1⅞)			
LNAV MDA	1040/24	578 (600-½)	1040-1¼	578 (600-1¼)		
CIRCLING	1100-1	637 (700-1)	1120-1¾ 657 (700-1¾)	1140-2¼ 677 (700-2¼)		

