

WAAS CH 90516 W32A	APP CRS 321°	Rwy Idg 3851 TDZE 1122 Apt Elev 1122
--	------------------------	---

RNAV (GPS) RWY 32

WEBSTER CITY MUNI (EBS)

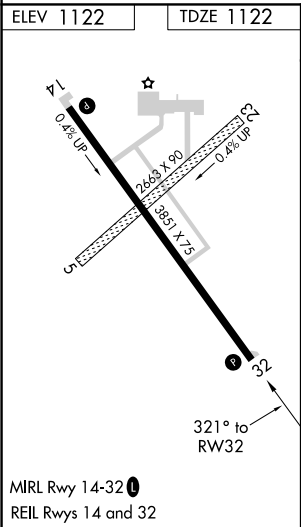
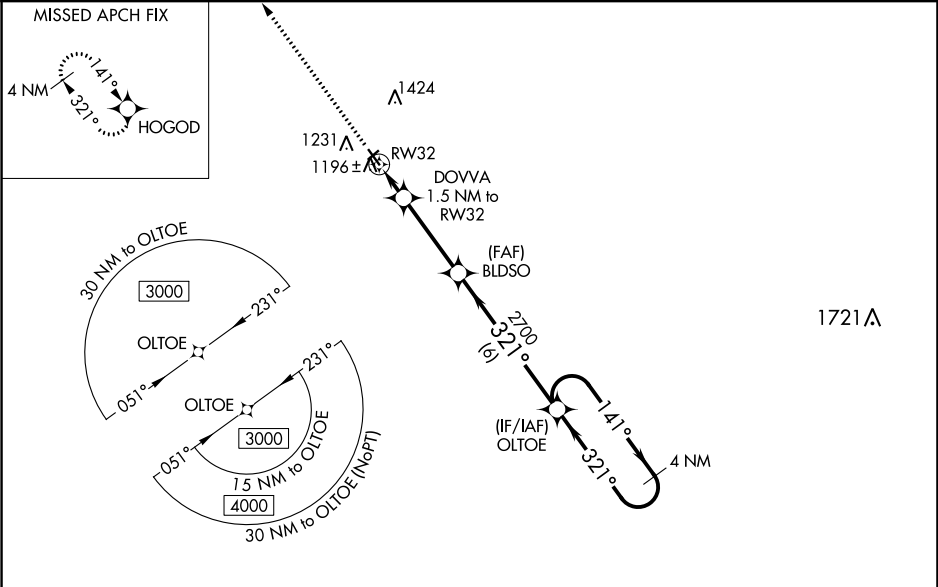
⚠

⚠

For uncompensated Baro-VNAV systems, LNAV/VNAV NA below -17°C (2°F) or above 54°C (130°F). DME/DME RNP-0.3 NA. When local altimeter setting not received, use Clarion altimeter setting and increase all DA 49 feet and all MDA 60 feet. Baro-VNAV and VDP NA when using Clarion altimeter setting. Helicopter visibility reduction below ¾ SM NA.

MISSED APPROACH: Climb to 3000 direct HOGOD and hold.

AWOS-3 127.825	MINNEAPOLIS CENTER 134.0 288.3	UNICOM 122.8 (CTAF) 1
--------------------------	--	---------------------------------



3000	HOGOD	VGSI and RNAV glidepath not coincident (VGSI Angle 3.00/TCH 30).			
*LNAV only.		DOVVA 1.5 NM to RW32	BLD SO	OLTOE	4 NM Holding Pattern
1 NM to RW32		1620	2700	2700	GP 3.00° TCH 40
1 NM		0.5 NM	3.3 NM	6 NM	
CATEGORY	A	B	C	D	
LPV DA	1372-1	250 (300-1)		NA	
LNAV/VNAV DA	1372-1	250 (300-1)		NA	
LNAV MDA	1460-1	338 (400-1)		NA	
CIRCLING	1600-1	478 (500-1)		NA	