

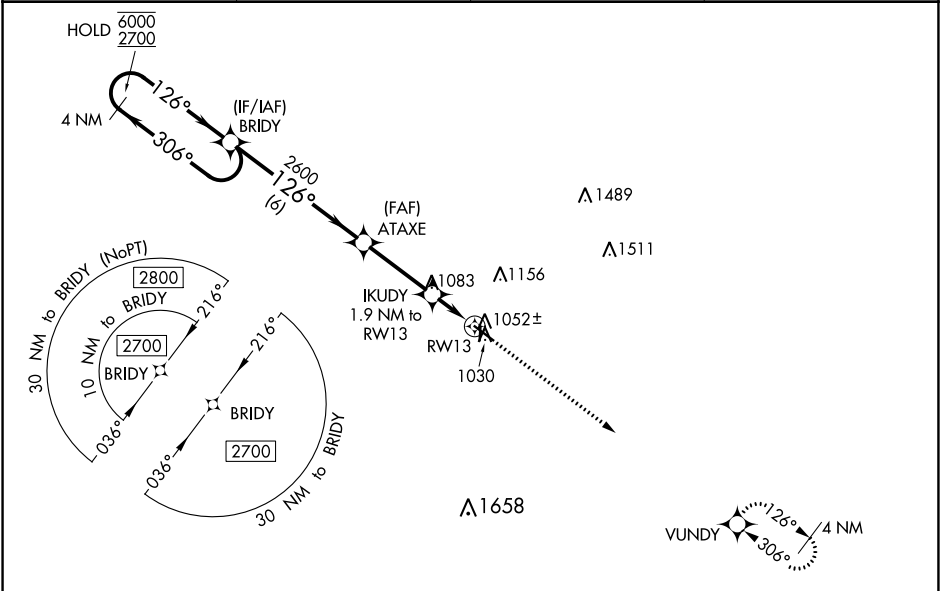
WAAS CH <b>50236</b> <b>W13A</b>	APP CRS <b>126°</b>	Rwy Idg TDZE <b>975</b> Apt Elev <b>975</b>
--	------------------------	---

RNAV (GPS) RWY 13

MARSHALLTOWN MUNI (MIW)

RNP APCH. <div><div>▼</div> Circling Rwy 18, 36 NA at night. Baro-VNAV and VDP NA when using Grinnell altimeter setting. For uncompensated Baro-VNAV systems, LNAV/VNAV NA below -21°C or above 54°C. <div>▲</div> When local altimeter setting not received, use Grinnell altimeter setting and increase all DA 64 feet and all MDA 80 feet; increase LNAV Cats C/D and Circling Cat D visibility ¼ SM.</div>		MISSED APPROACH: Climb to 2600 direct VUNDY and hold.
---	--	--

ASOS <b>128.325</b>	WATERLOO APP CON ★ <b>120.9</b>	CLNC DEL <b>120.9</b>	UNICOM <b>122.8 (CTAF)</b>
------------------------	------------------------------------	--------------------------	-------------------------------



4 NM Holding Pattern					BRIDY		ATAXE		IKUDY 1.9 NM to RW13		2600 VUNDY		
6000 ← 306°		2700 → 126°		126°		2600		*1620		*1 NM to RW13		*LNAV only	
GP 3.00°		TCH 42		6 NM		3.1 NM		0.9		1 NM			
CATEGORY		A		B		C		D					
LPV DA				1225-1		250 (300-1)							
LNAV/VNAV DA				1225-1		250 (300-1)							
LNAV MDA				1320-1		345 (400-1)							
CIRCLING		1400-1 425 (500-1)		1440-1 465 (500-1)		1460-1½ 485 (500-1½)		1840-2¾ 865 (900-2¾)					

ELEV 975

TDZE 975

MIRL Rwy 13-31 and 18-36

REIL Rwy 13 and 31