

WAAS CH <b>48936</b> <b>W31A</b>	APP CRS <b>306°</b>	Rwy Idg <b>5007</b> TDZE <b>973</b> Apt Elev <b>975</b>
--	------------------------	---

# RNAV (GPS) RWY 31

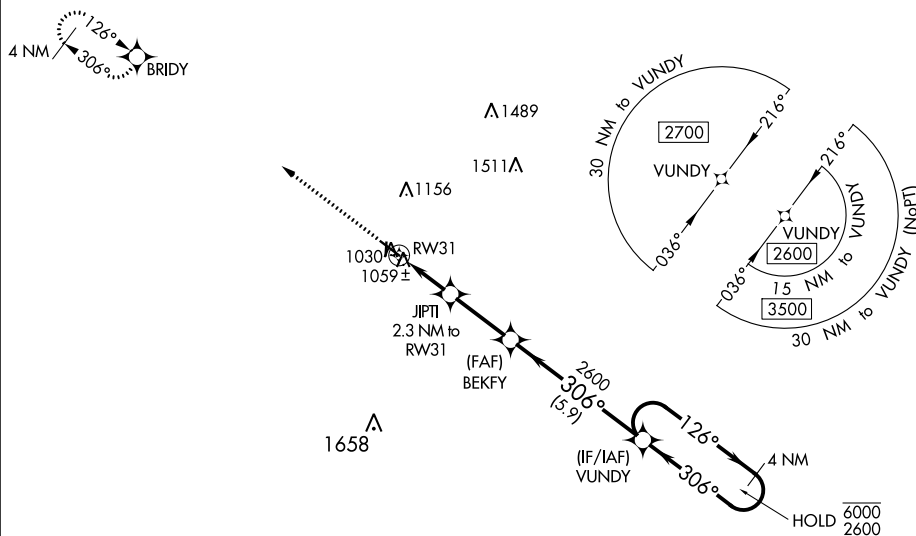
## MARSHALLTOWN MUNI (MIW)

RNP APCH.	
-----------	--

**▼** Baro-VNAV and VDP NA when using Grinnell altimeter setting. Rwy 31 Helicopter visibility reduction below  $\frac{3}{4}$  SM NA. For uncompensated Baro-VNAV systems, LNAV/VNAV NA below -22°C or above 54°C. When local altimeter setting not received, use Grinnell altimeter setting and increase all DA 64 feet and all MDA 80 feet; increase LPV and LNAV/VNAV all Cats visibility  $\frac{1}{8}$  SM and LNAV Cats C/D and Circling Cat D visibility  $\frac{1}{4}$  SM. Circling Rwy 18, 36 NA at night.

**MISSED APPROACH:**  
Climb to 2700 direct  
BRIDY and hold.

ASOS <b>128.325</b>	WATERLOO APP CON ★ <b>120.9</b>	CLNC DEL <b>120.9</b>	UNICOM <b>122.8</b> (CTAF) <b>L</b>
------------------------	------------------------------------	--------------------------	--



CATEGORY	A	B	C	D
LPV DA	1223-1	250 (300-1)		
LNAV/VNAV DA	1223-1	250 (300-1)		
LNAV MDA	1320-1	347 (400-1)		

CIRCLING	1400-1 425 (500-1)	1440-1 465 (500-1)	1460-1½ 485 (500-1½)	1840-2¾ 865 (900-2¾)
----------	-----------------------	-----------------------	-------------------------	-------------------------

MIRL Rwy 13-31 and 18-36  
REIL Rwy 13 and 31

MARSHALLTOWN, IOWA

Amdt 1B 28FEB19

42°07'N-92°55'W

MARSHALLTOWN MUNI (MIW)  
RNAV (GPS) RWY 31

NC-3, 03 DEC 2020 to 31 DEC 2020