

WAAS CH <b>90409</b> <b>W12A</b>	APP CRS <b>120°</b>	Rwy Idg TDZE Apt Elev	<b>5000</b> <b>1274</b> <b>1274</b>
----------------------------------------	------------------------	-----------------------------	-------------------------------------------

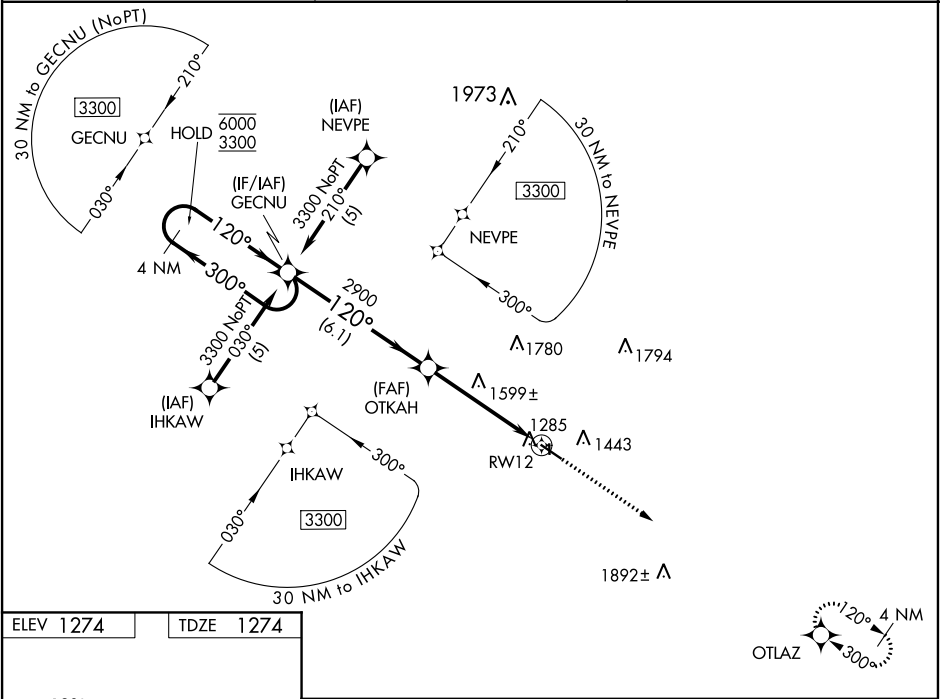
RNAV (GPS) RWY 12  
DENISON MUNI (DNS)

**RNP APCH.**

**⚠** Circling NA to Rws 18 and 36. For uncompensated Baro-VNAV systems, LNAV/VNAV NA below -17°C or above 54°C. Baro-VNAV and VDP NA when using Carroll altimeter setting. When local altimeter setting not received, use Carroll altimeter setting; increase LPV DA 1596 feet, LNAV/VNAV DA to 1626 feet; increase all MDAs 80 feet and visibility LNAV Cat C ½ SM and Circling Cat C ¼ SM.

**MISSED APPROACH:**  
Climb to 3900 direct  
OTLAZ and hold.

AWOS-3 <b>119.95</b>	MINNEAPOLIS CENTER <b>119.6 290.4</b>	UNICOM <b>122.8 (CTAF) 0</b>
-------------------------	------------------------------------------	---------------------------------



ELEV 1274 TDZE 1274

120° to RWY 12

81  
2019 X 105  
36  
0.9% UP  
5000 X 75  
0.3% UP  
50

MIRL Rwy 12-30 0

REIL Rws 12 and 30 0

4 NM Holding Pattern				VGSI and RNAV glidepath not coincident (VGSI Angle 3.00/TCH 27).	3900	OTLAZ
GECNU				OTKAH	*LNAV only	
6000 ← 300°				2900	*1.8 NM to RWY 12	
3300 → 120°				2900	RWY 12	
GP 3.00° TCH 40				6.1 NM	3.1 NM	1.8
CATEGORY	A	B	C	D		
LPV DA		1524-1 250 (300-1)		NA		
LNAV/VNAV DA		1554-1 280 (300-1)		NA		
LNAV MDA	1860-1	586 (600-1)	1860-1 586 (600-1 3/4)	NA		
CIRCLING	1860-1 586 (600-1)	1880-1 606 (700-1)	1880-1 3/4 606 (700-1 3/4)	NA		

NC-3, 03 DEC 2020 to 31 DEC 2020

NC-3, 03 DEC 2020 to 31 DEC 2020