

RNAV (GPS) RWY 34
CRESTON MUNI (CSQ)

MISSED APPROACH: Climb to 3000 direct
NOCSI and hold.

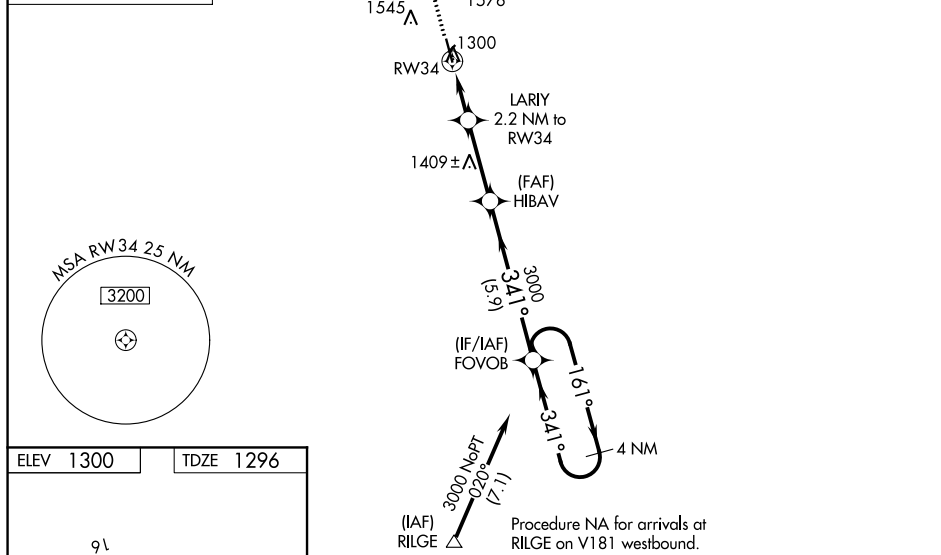


Diagram of the RW34 instrument approach procedure. The diagram shows a runway with a 400 x 75 ft surface. The approach is for RW34, with a heading of 341°. The holding pattern is a 3000 ft circle. The diagram also shows the runway dimensions (1692 x 100 ft) and the approach path (341° to RW34).

CATEGORY	A	B	C	D
LP MDA	1660-1	364 (400-1)		NA
LNAV MDA	1660-1	364 (400-1)		NA
CIRCLING	1720-1 420 (500-1)	1760-1 460 (500-1)	1820-1½ 520 (600-1½)	NA

NC-3, 03 DEC 2020 to 31 DEC 2020