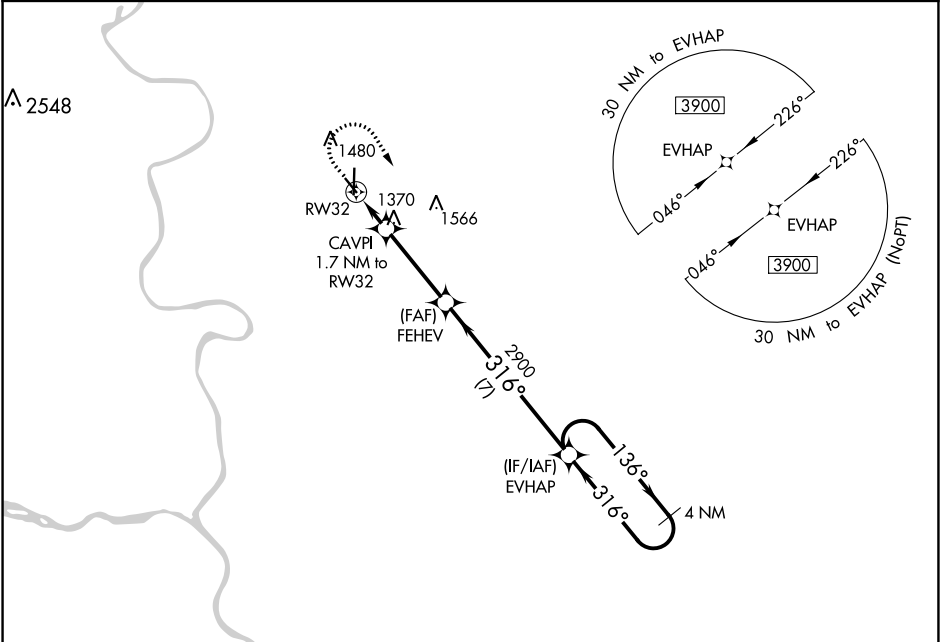


WAAS CH 90441 W32A	APP CRS 316°	Rwy Idg TDZE Apt Elev	3650 1245 1245
--	------------------------	-----------------------------	---

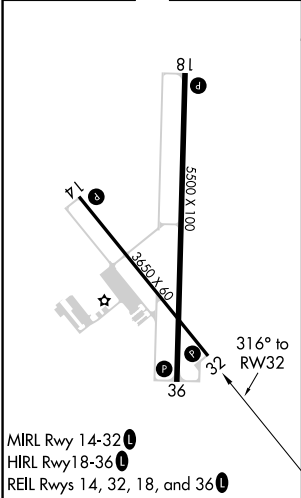
RNAV (GPS) RWY 32
COUNCIL BLUFFS MUNI (CBF)

For uncompensated Baro-VNAV systems, LNAV/VNAV NA below -18°C (0°F) or above 54°C (130°F). DME/DME RNP- 0.3 NA.	MISSED APPROACH: Climb to 2000 then climbing right turn to 3900 direct EVHAP and hold.
--	--

AWOS-3 126.575	OMAHA APP CON 124.5 263.0	CLNC DEL 127.675	UNICOM 122.8 (CTAF)
--------------------------	-------------------------------------	----------------------------	-------------------------------



ELEV 1245	TDZE 1245
-----------	-----------



2000	3900	EVHAP	VGSI and RNAV glidepath not coincident (VGSI Angle 3.50/TCH 30).	4 NM Holding Pattern
*LNAV only	CAVPI 1.7 NM to RW32	FEHEV 2900	EVHAP	GP 3.00° TCH 40
*0.9 NM to RW32	*1820	2900	136°	3900
0.9	0.8	3.4 NM	7 NM	
CATEGORY	A	B	C	D
LPV DA		1445-¾	200 (200-¾)	
LNAV/VNAV DA		1495-¾	250 (300-¾)	
LNAV MDA		1620-1	375 (400-1)	
CIRCLING	1780-1	535 (600-1)	1780-1½ 535 (600-1½)	1880-2 635 (700-2)