

WAAS CH 99701 W24A	APP CRS 240°	Rwy Idg TDZE Apt Elev	5500 545 547
--	------------------------	-----------------------------	---

RNAV (GPS) RWY 24
MUSCATINE MUNI (MUT)

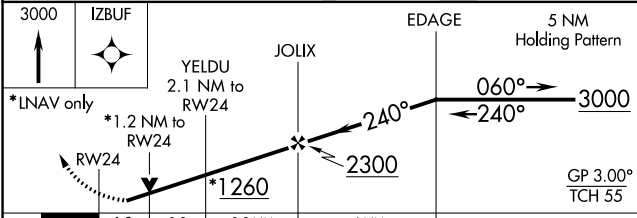
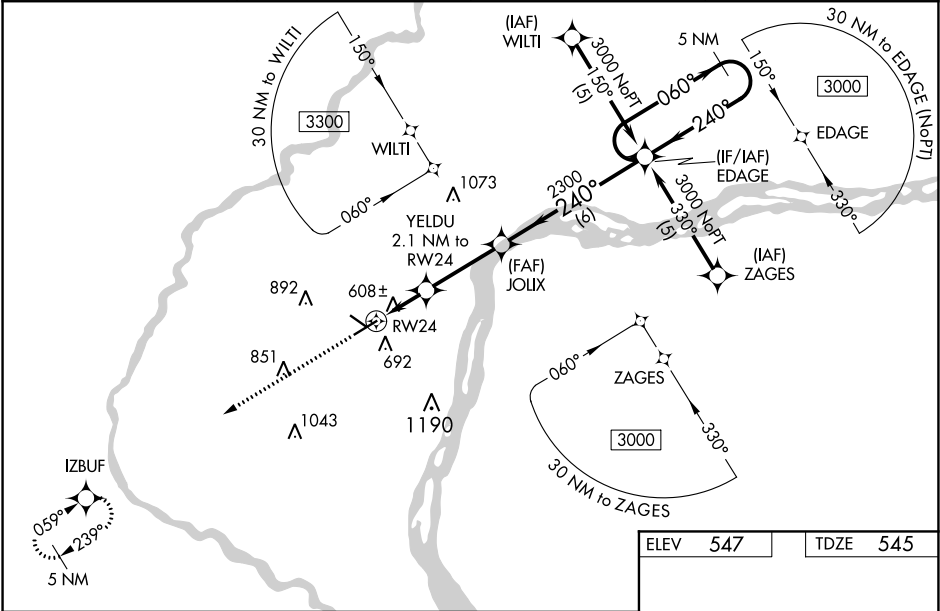
RNP APCH

▼ For uncompensated Baro-VNAV systems, LNAV/VNAV NA below -16°C (4°F) or above 48°C (118°F). For inop ALS, increase LPV all visibilities to 1 SM, increase LNAV/VNAV all Cats and LNAV Cats C visibility to 1½ SM, and increase LNAV Cat D visibility to 1¼ SM. When local altimeter setting not received, use Iowa City altimeter setting and increase LPV DA to 992 and all visibilities ½ SM; increase LNAV/VNAV DA to 1030 feet and all visibilities ¼ SM; increase all MDA 80 feet and LNAV Cats C and D visibility ¼ SM and Circling Cat C visibility ¼ SM. For inop ALS when using Iowa City altimeter setting, increase LPV all visibilities to 1 SM, LNAV/VNAV all visibilities to 1¾ SM, LNAV Cats A and B visibility to 1 SM, and LNAV Cats C and D visibility to 1¾ SM. Baro-VNAV and VDP NA when using Iowa City altimeter setting.

MALSR

MISSED APPROACH:
Climb to 3000 direct
IZBUF and hold.

AWOS-3 119.775	QUAD CITY APP CON * 133.275 257.8	CLNC DEL 119.125	UNICOM 122.7 (CTAF) 0
--------------------------	---	----------------------------	---------------------------------



CATEGORY	A	B	C	D
LPV DA	812-½	267 (300-½)		
LNAV/VNAV DA	950-¾	405 (500-¾)		
LNAV MDA	960-½	415 (500-½)	960-¾ 415 (500-¾)	960-1 415 (500-1)
CIRCLING	1080-1¼ 533 (600-1¼)	1200-1¼ 653 (700-1¼)	1200-1¾ 653 (700-1¾)	1500-3 953 (1000-3)

ELEV 547 TDZE 545

REIL Rwy 6, 12, and 30 0
MIRL Rwy 6-24 and 12-30 0

NC-3, 03 DEC 2020 to 31 DEC 2020

NC-3, 03 DEC 2020 to 31 DEC 2020