

WAAS CH 42636 W30A	APP CRS 306°	Rwy Idg TDZE Apt Elev	4000 543 547
--	------------------------	-----------------------------	---

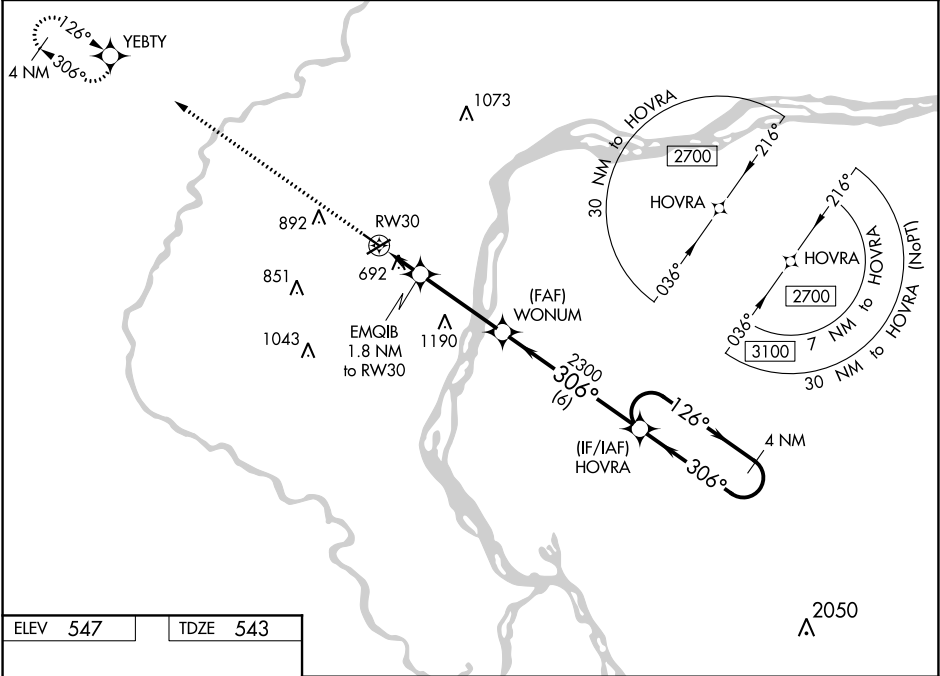
RNAV (GPS) RWY 30
MUSCATINE MUNI (MUT)

T DME/DME RNP-0.3 NA. Helicopter visibility reduction below 1 SM NA. VDP and Baro-VNAV NA with Iowa City altimeter setting. When local altimeter setting not received, use Iowa City altimeter setting and increase all DA 76 feet and all MDA 80 feet, increase LNAV/VNAV all Cals visibility ¼ mile. For uncompensated Baro-VNAV systems, LNAV/VNAV NA below -16°C (4°F) or above 54°C (130°F).

A

MISSED APPROACH: Climb to 2600 direct YEBTY and hold.

AWOS-3 119.775	QUAD CITY APP CON ★ 133.275 257.8	CLNC DEL 119.125	UNICOM 122.7 (CTAF) 0
--------------------------	---	----------------------------	---------------------------------



ELEV 547 TDZE 543

REIL Rwy 6, 12, and 30 0
MIRL Rwy 6-24 and 12-30 0

The inset chart shows the approach path with altitudes of 4000, 30, 633, and 5500. It also indicates a 306° heading to RW30.

2600	YEBTY	EMQIB 1.8 NM to RW30	WONUM 2300	HOVRA 4 NM Holding Pattern
* LNAV only				
* 1.2 NM to RW30				
* 1140				
2300				
GP 3.00° TCH 40				
CATEGORY	A	B	C	D
LPV DA	743-1	200 (200-1)	NA	
LNAV/VNAV DA	989-1½	446 (500-1½)	NA	
LNAV MDA	960-1	417 (500-1)	NA	
CIRCLING	1000-1 453 (500-1)	1200-1 653 (700-1)	NA	

NC-3, 03 DEC 2020 to 31 DEC 2020

NC-3, 03 DEC 2020 to 31 DEC 2020