

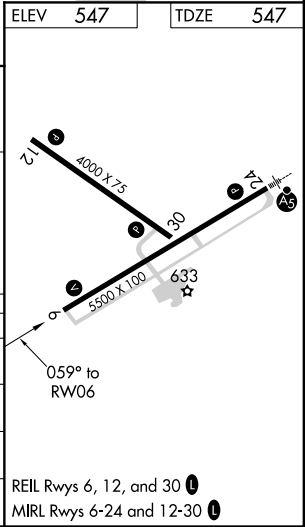
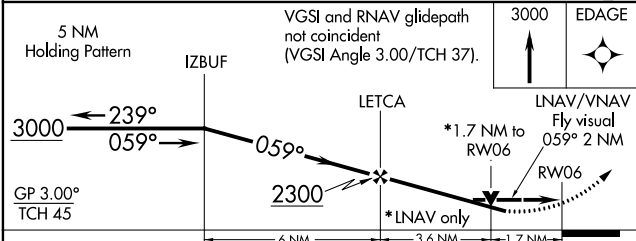
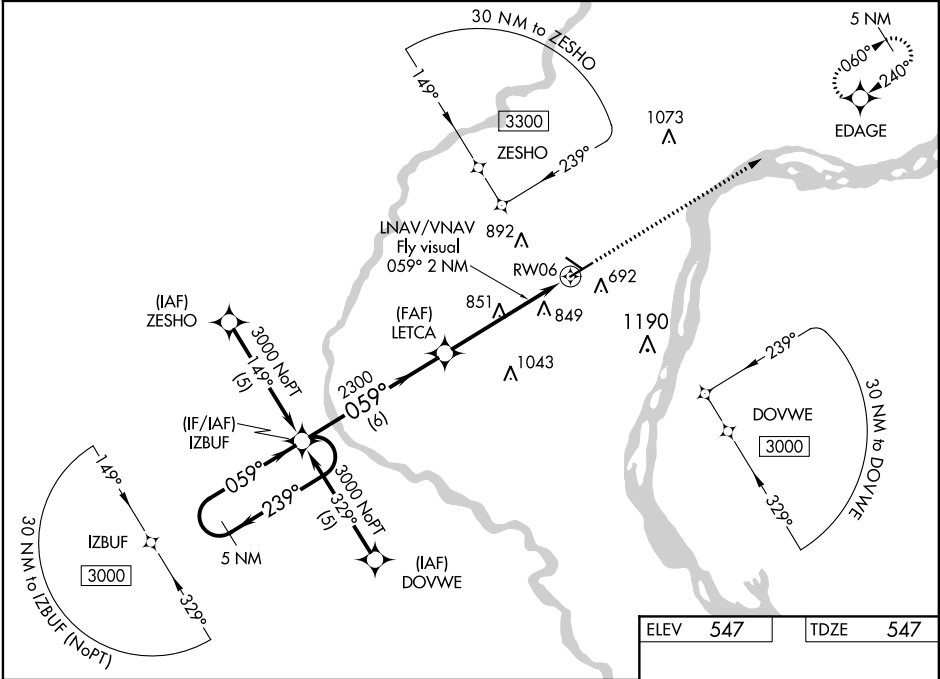
WAAS CH <b>53701</b> <b>W06A</b>	APP CRS <b>059°</b>	Rwy Idg TDZE Apt Elev	<b>5500</b> <b>547</b> <b>547</b>
--	------------------------	-----------------------------	---

**RNAV (GPS) RWY 6**  
MUSCATINE MUNI (MUT)

**⚠** DME/DME RNP-0.3 NA. Visibility reductions by helicopters NA. For uncompensated Baro-VNAV systems, LNAV/VNAV NA below -16°C (4°F) or above 48°C (118°F). If local altimeter setting not received, use Iowa City Muni altimeter setting and increase all DAs/MDAs 80 feet. Baro-VNAV and VDP NA when using Iowa City Muni altimeter setting.

MISSED APPROACH: Climb to 3000 direct EDAGE and hold.

AWOS-3 <b>119.775</b>	QUAD CITY APP CON ★ <b>133.275 257.8</b>	CLNC DEL <b>119.125</b>	UNICOM <b>122.7 (CTAF) 0</b>
--------------------------	---	----------------------------	---------------------------------



CATEGORY	A	B	C	D
LPV DA	1076-2 529 (600-2)			
LNAV/VNAV DA	1232-2 685 (700-2)			1232-2¼ 685 (700-2¼)
LNAV MDA	1120-1 573 (600-1)	1120-1½ 573 (600-1½)		1120-1¾ 573 (600-1¾)
CIRCLING	1120-2½ 573 (600-2½)	1160-2½ 613 (700-2½)	1200-2½ 653 (700-2½)	

NC-3, 03 DEC 2020 to 31 DEC 2020

NC-3, 03 DEC 2020 to 31 DEC 2020