

WAAS CH <b>56213</b> <b>W24A</b>	APP CRS <b>244°</b>	Rwy Idg <b>5130</b> TDZE <b>817</b> Apt Elev <b>823</b>
--	------------------------	---

## RNAV (GPS) RWY 24

MEXICO MEMORIAL (MYJ)

**T**  
**A** NA

Helicopter visibility reduction below  $\frac{3}{4}$  SM NA. Inoperative table does not apply.  
DME/DME RNP-0.3 NA. For uncompensated Baro-VNAV systems, LNAV/VNAV NA below -16°C (4°F) or above 54°C (130°F). When local altimeter setting not received, use Columbia Rgnl altimeter setting and increase all DA/MDA 80 feet.  
Baro-VNAV NA when using Columbia Rgnl altimeter setting.

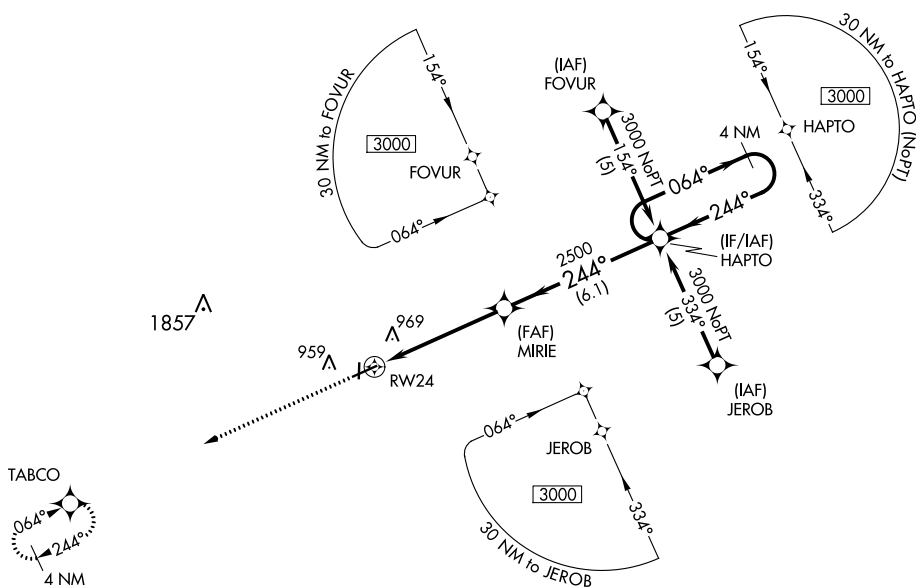
MALSR



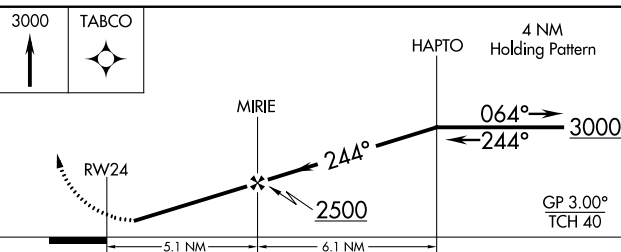
**MISSED APPROACH:**  
Climb to 3000 direct  
TABCQ and hold.

AWOS-3PT  
120.575

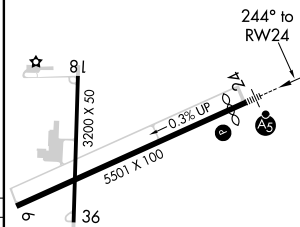
MIZZU APP CON  
124.375

CTAF  
122.9 **L**

ELEV 823		TDZE 817
----------	--	----------



CATEGORY	A	B	C	D
LPV DA	1126-1	309 (400-1)		NA
LNAV/ VNAV DA	1278-1¾	461 (500-1¾)		NA
LNAV MDA	1220-1	403 (400-1)	1220-1¼ 403 (400-1¼)	NA
CIRCLING	1280-1	457 (500-1)	1280-1½ 457 (500-1½)	NA



REIL Rwy 18 **L**  
MIRL Rwy 6-24 **L**  
LIRL Rwy 18-36 **L**