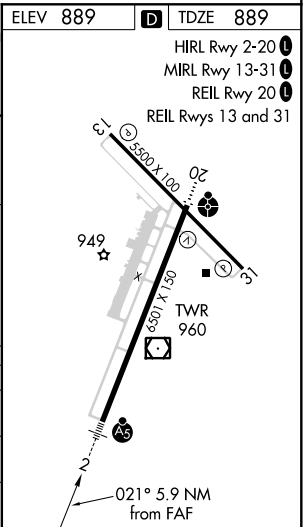
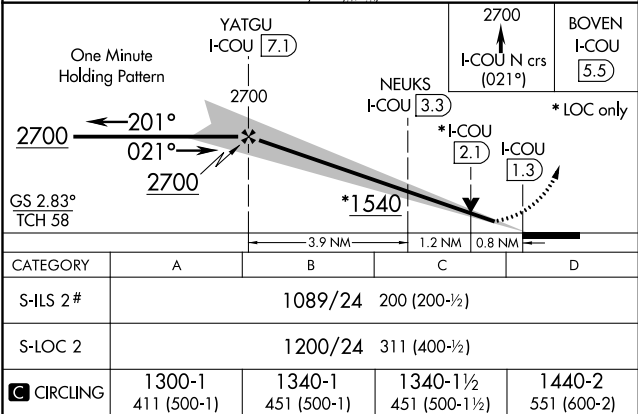
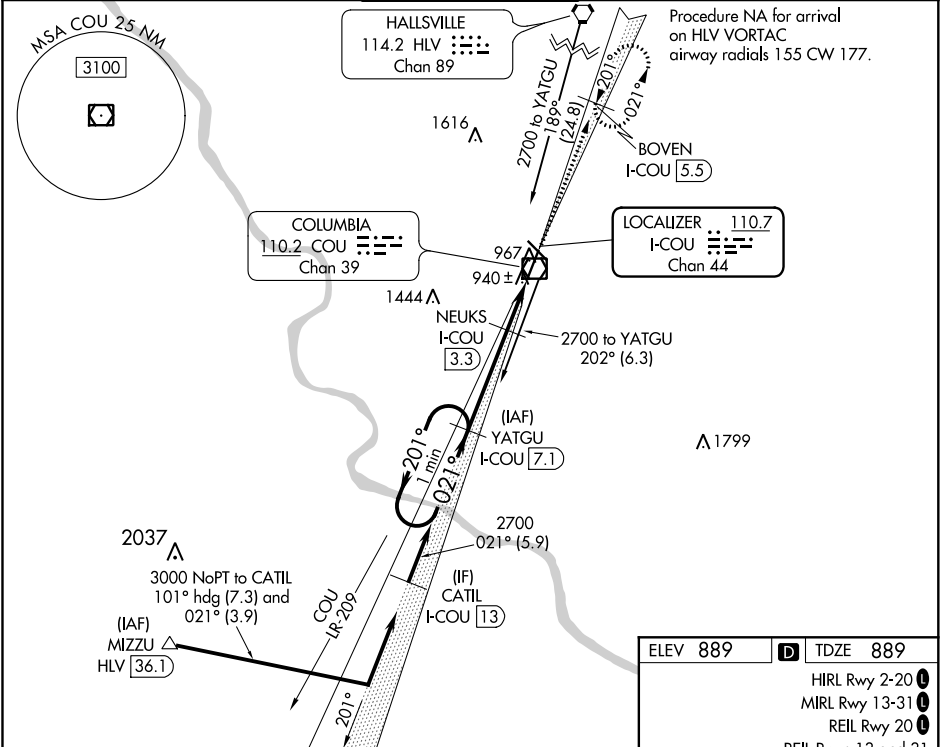


LOC/DME I-COU 110.7 Chan 44	APP CRS 021°	Rwy Idg 6501 TDZE 889 Apt Elev 889
---	------------------------	---

ILS or LOC RWY 2
COLUMBIA RGNL (COU)

⚠ Circling NA for Cat D west of Rwy 2 and 13. DME required. # RVR 1800 authorized with use of FD or AP or HUD to DA.	MALSR A5	MISSED APPROACH: Climb to 2700 on I-COU localizer north course (021°) to BOVEN/I-COU 5.5 DME and hold.
---	---------------------------	---

ATIS 128.45	MIZZU APP CON 124.375 353.7	COLUMBIA TOWER ★ 119.3 (CTAF) 363.25	GND CON 121.6	UNICOM 122.95
------------------------------	--	---	--------------------------------	--------------------------------



NC-3, 03 DEC 2020 to 31 DEC 2020

NC-3, 03 DEC 2020 to 31 DEC 2020