

VOR/DME COU	APP CRS	Rwy Idg	6501
110.2	199°	TDZE	889
Chan 39		Apt Elev	889

VOR Z RWY 20  
COLUMBIA RGNL (COU)

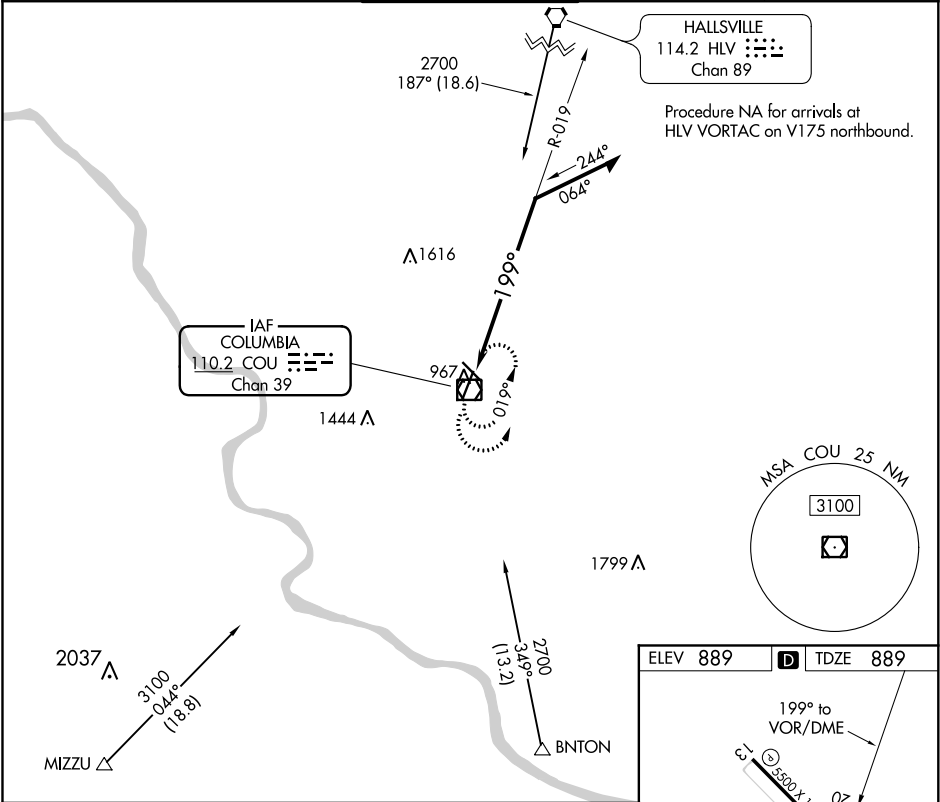
**V**

Inop table does not apply to S-20 Cats C/D.  
Circling NA for Cat D west of Rwy 2 and 13.

ODALS

MISSED APPROACH: Climbing left turn to 2800 in COU  
VOR/DME holding pattern.

ATIS 128.45	MIZZU APP CON 124.375 353.7	COLUMBIA TOWER ★ 119.3 (CTAF) 0 363.25	GND CON 121.6	UNICOM 122.95
----------------	--------------------------------	---	------------------	------------------



2800 COU

COU VOR/DME

019°

2700

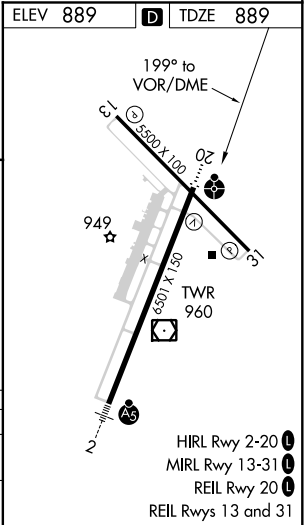
199°

COU 2.2

Remain within 10 NM

1.5 NM

CATEGORY	A	B	C	D
S-20	1400-3/4	511 (600-3/4)	1400-1 3/8	511 (600-1 3/8)
CIRCLING	1400-1	511 (600-1)	1400-1 1/2	1440-2
			511 (600-1 1/2)	551 (600-2)



NC-3, 03 DEC 2020 to 31 DEC 2020

NC-3, 03 DEC 2020 to 31 DEC 2020