

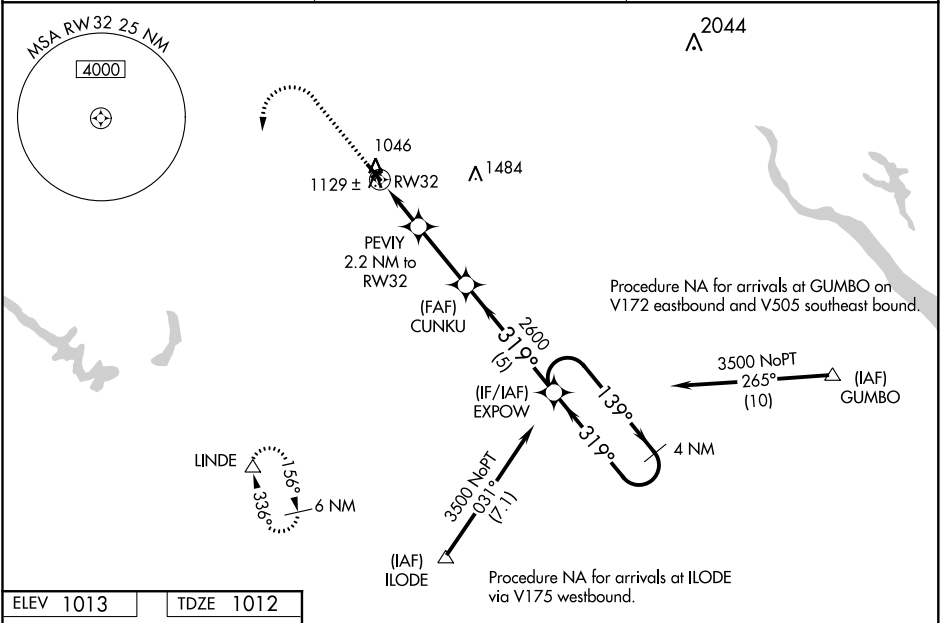
WAAS CH 90508 W32A	APP CRS 319°	Rwy Idg TDZE Apt Elev	4001 1012 1013
----------------------------------------	------------------------	-----------------------------	-------------------------------------------

RNAV (GPS) RWY 32
PERRY MUNI (PRO)

⚠ For uncompensated Baro-VNAV systems, LNAV/VNAV NA below -17°C (2°F) or above 54°C (130°F). DME/DME RNP-0.3 NA. When local altimeter setting not received, use Boone altimeter setting and increase all DA 66 feet and all MDA 80 feet. Increase LPV visibility all Cats to ¾ mile, and increase LNAV/VNAV visibility all Cats to 1 ½ mile. Baro-VNAV and VDP NA when using Boone altimeter setting.

MISSED APPROACH: Climb to 1500 then climbing left turn to 3500 direct LINDE and hold.

AWOS-3 118.0	DES MOINES APP CON 135.2 360.7	UNICOM 122.8 (CTAF) 0
------------------------	------------------------------------------	---------------------------------



ELEV 1013	TDZE 1012
-----------	-----------

MIRL Rwy 14-32

REIL Rwy 14 and 32

319° to RW32

1500	3500	LINDE	VGSI and RNAV glidepath not coincident (VGSI Angle 3.00/TCH 28).	
* LNAV only.				
PEVIY 2.2 NM to RW32				
* 1.1 NM to RW32				
RW32				
1740*				
CUNKU 2600				
EXPOW				
4 NM Holding Pattern				
139°				
319°				
3500				
GP 3.00° TCH 40				
CATEGORY	A	B	C	D
LPV DA	1212-3/4	200 (200-3/4)	NA	
LNAV/VNAV DA	1299-7/8	287 (300-7/8)	NA	
LNAV MDA	1380-1	368 (400-1)	NA	
CIRCLING	1460-1 447 (500-1)	1480-1 467 (500-1)	NA	

NC-3, 03 DEC 2020 to 31 DEC 2020

NC-3, 03 DEC 2020 to 31 DEC 2020