

WAAS CH 78415 W18A	APP CRS 185°	Rwy Idg TDZE Apt Elev	4305 1197 1197
--	------------------------	-----------------------------	---

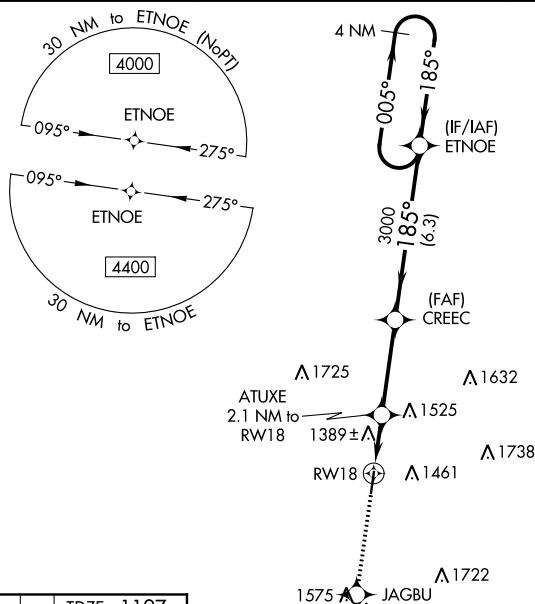
RNAV (GPS) RWY 18
LE MARS MUNI (L.R.J.)

MISSED APPROACH: Climb to 4500 direct JAGBU and on track 133° to FEXAT and hold.

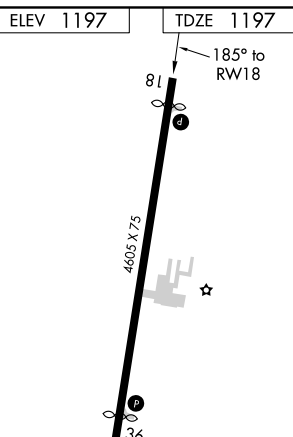
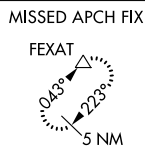
Baro-VNAV NA when using Orange City altimeter setting. For uncompensated Baro-VNAV systems, LNAV/VNAV NA below -17°C (2°F) or above 54°C (130°F). DME/DME RNP-3 NA. When local altimeter setting not received, use Orange City altimeter setting and increase LPV DA to 1510 feet, LNAV/VNAV DA to 1774 feet and LNAV/VNAV all Cats visibility ¼ mile; increase all MDA 80 feet and LNAV Cat C and Circling Cat C visibility ¼ mile. VDP NA with Orange City altimeter setting.

AWOS-3P
120.975

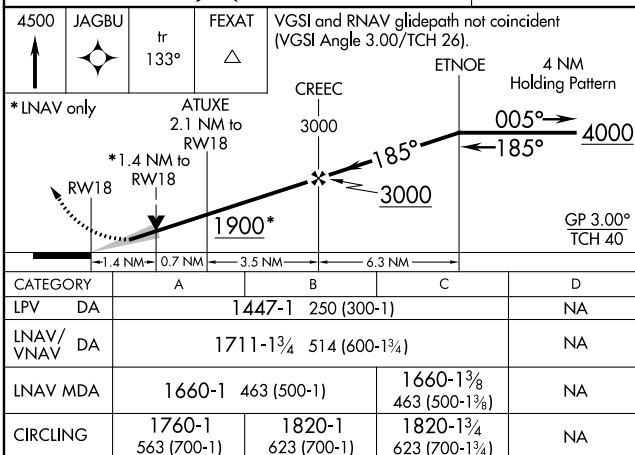
SIOUX CITY APP CON ★
 124.6 307.0

UNICOM
122.8 (CTAF) **L**

A1900



MIRL Rwy 18-36 **L**
REIL Rwy 18 and 36 **L**



RNAV (GPS) RWY 18